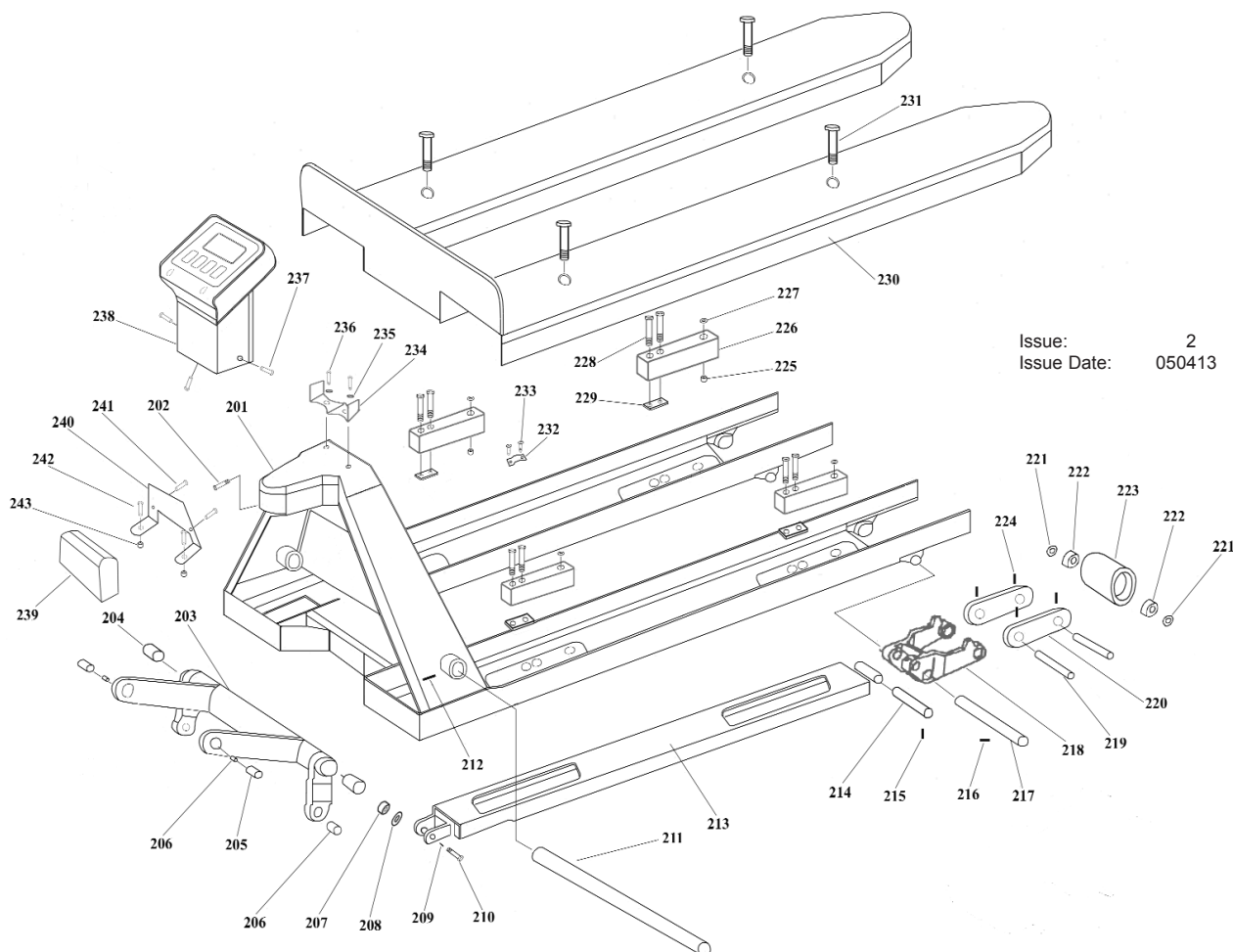


### FRAME ASS'Y



Issue: 2  
 Issue Date: 050413

ITEM	PART NO	DESCRIPTION
201	PT1150SC2.201	CHASSIS
202	PT1150SC2.202	BOLT
203	PT1150SC2.203	ROCK-ARM
204	PT1150SC2.204	BUSHING
205	PT1150SC2.205	SHAFT
206	PT1150SC2.206	BUSHING
207	PT1150SC2.207	NUT
208	PT1150SC2.208	WASHER
209	PT1150SC2.209	SPLIT PIN
210	PT1150SC2.210	BOLT
211	PT1150SC2.211	LONG SHAFT
212	PT1150SC2.212	ELASTIC PIN
213	PT1150SC2.213	PUSHING ROD
214	PT1150SC2.214	SHAFT
215	PT1150SC2.215	ELEASTIC PIN
216	PT1150SC2.216	ELASTIC PIN
217	PT1150SC2.217	SHAFT
218	PT1150SC2.218	FRAME OF ROLLER
219	PT1150SC2.219	AXLE FOR ROLLER
220	PT1150SC2.220	LINKING PLATE
221	PT1150SC2.221	WASHER
222	PT1150SC2.222	BEARING

ITEM	PART NO	DESCRIPTION
223	PT1150SC2.223	LOAD ROLLER
224	PT1150SC2.224	ELASTIC PIN
225	PT1150SC2.225	NUT
226	PT1150SC2.226	LOAD CELL
227	PT1150SC2.227	WASHER
228	PT1150SC2.228	BOLT
229	PT1150SC2.229	LOAD CELL MOUNTING PLATE
230	PT1150SC2.230	FORK SHOE
231	PT1150SC2.231	FORK SHOE BOLT
232	PT1150SC2.232	CLAMP FOR CABLE
233	PT1150SC2.233	SCREW
234	PT1150SC2.234	INDICATOR SUPPORT BRACKET
235	PT1150SC2.235	BOLT RING
236	PT1150SC2.236	BOLT
237	PT1150SC2.237	BOLT
238	PT1150SC2.238	DISPLAY UNIT
239	PT1150SC2.239	JUNCTION BOX
240	PT1150SC2.240	JUNCTION BOX MOUNTING BRACKET
241	PT1150SC2.241	SCREW
242	PT1150SC2.242	BOLT
243	PT1150SC2.243	NUT

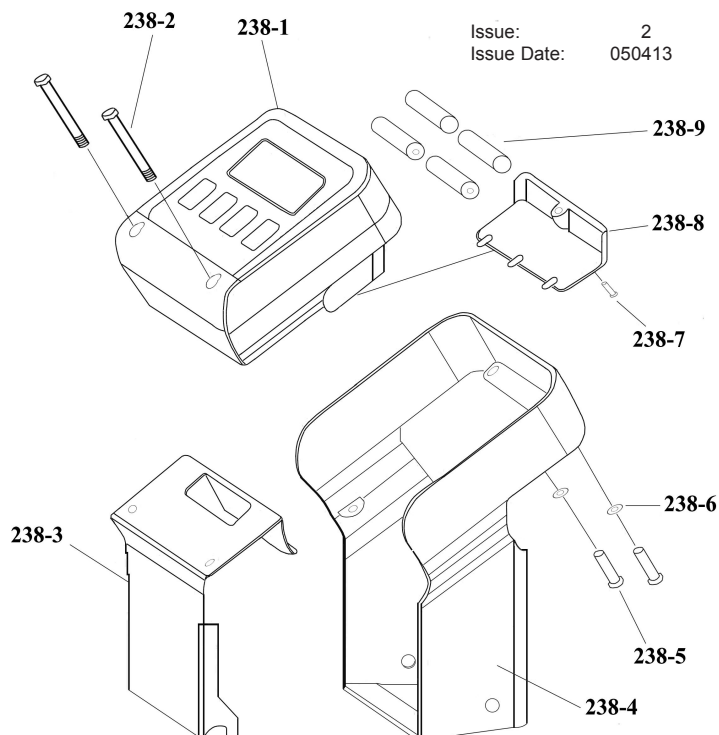
**NOTE:** It is our policy to continually improve products and as such we reserve the right to alter data, specifications and component parts without prior notice.

**IMPORTANT:** No liability is accepted for incorrect use of product.

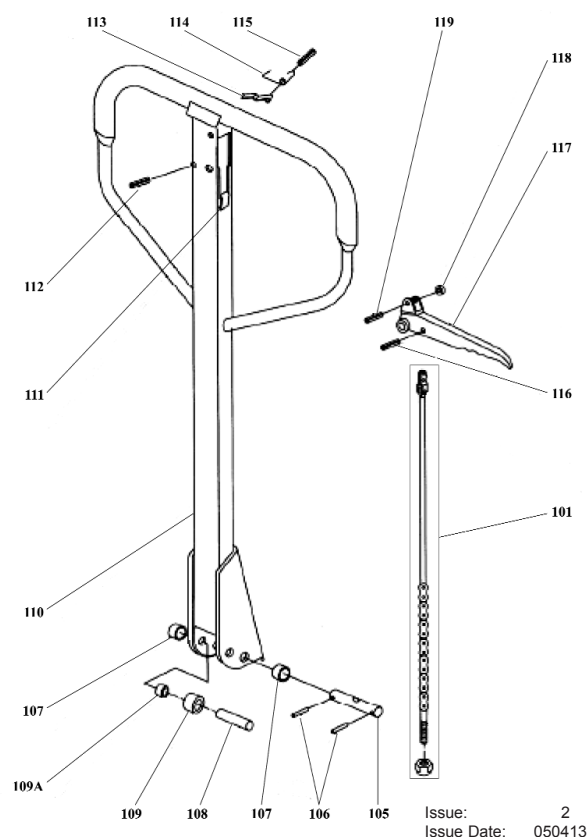
**WARRANTY:** Guarantee is 12 months from purchase date, proof of which will be required for any claim.

**INFORMATION:** For a copy of our latest catalogue and promotions call us on 01284 757525 and leave your full name and address, including postcode.

## DISPLAY UNIT



## HANDLE ASS'Y



ITEM	PART NO	DESCRIPTION
238-1	PT1150SC.238A	INDICATOR
238-2	PT1150SC.238B	BOLT
238-3	PT1150SC.238C	INDICATOR COMPLETE
238-4	PT1150SC.238D	INDICATOR SUPPORT
238-5	PT1150SC.238E	BOLT
238-6	PT1150SC.238F	WASHER
238-7	PT1150SC.238G	BOLT
238-8	PT1150SC.238H	BATTERY COVER
238-9	PT1150SC.238I	BATTERIES

ITEM	PART NO	DESCRIPTION
101	PT1150SC2.101	RELEASE ROD
105	PT1150SC2.105	AXLE WITH HOLE
106	PT1150SC2.106	ELASTIC PIN
107	PT1150SC2.107	BUSHING
108	PT1150SC2.108	ROLLER PIN
109	PT1150SC2.109	PRESSURE ROLLER
109A	PT1150SC.109A	BUSHING
110	PT1150SC2.110	DRAW-BAR
111	PT1150SC2.111	STOP RUBBER
112	PT1150SC2.112	ELASTIC PIN
113	PT1150SC2.113	BLADE SPRING
114	PT1150SC2.114	SPRING
115	PT1150SC2.115	ELASTIC PIN
116	PT1150SC2.116	ELASTIC PIN
117	PT1150SC2.117	CONTROL HANDLE
118	PT1150SC2.118	ROLLER
119	PT1150SC2.119	ELASTIC PIN

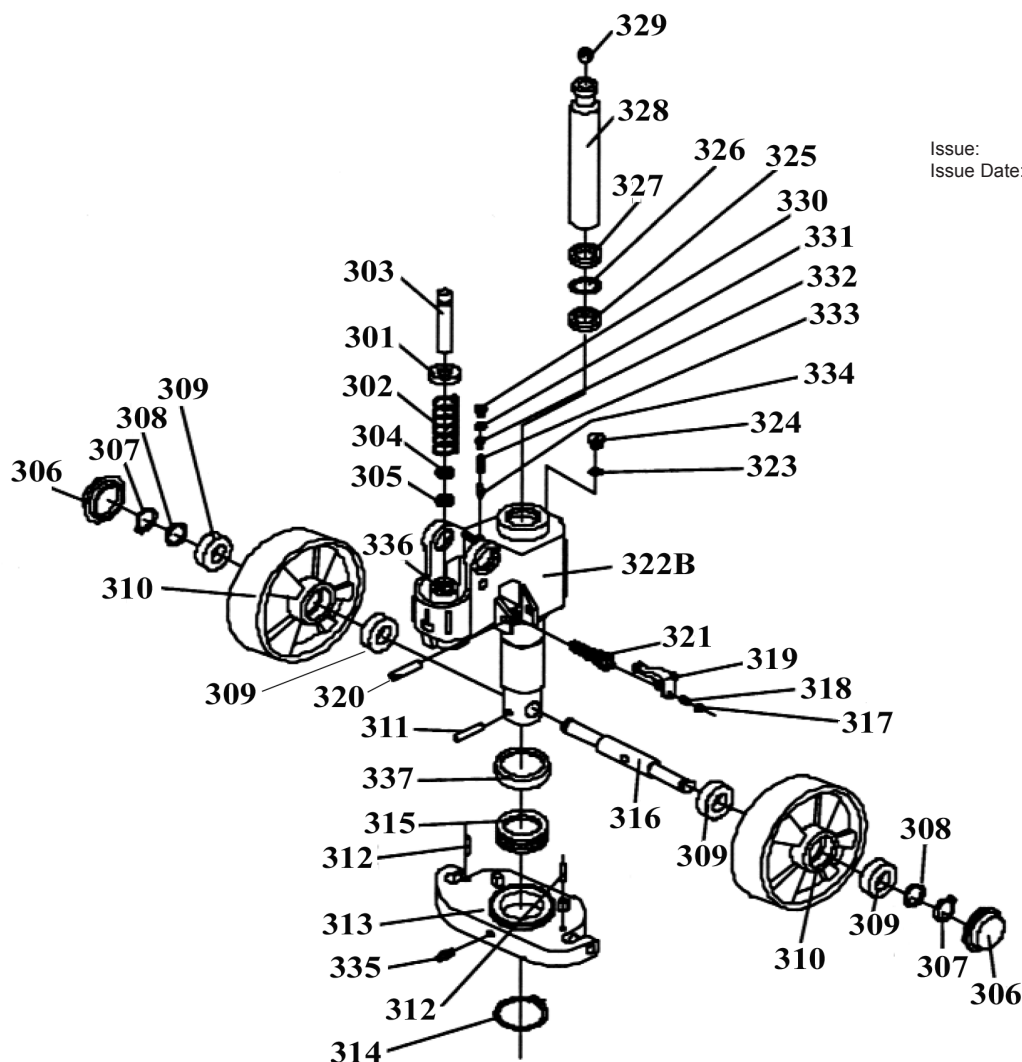
**NOTE:** It is our policy to continually improve products and as such we reserve the right to alter data, specifications and component parts without prior notice.

**IMPORTANT:** No liability is accepted for incorrect use of product.

**WARRANTY:** Guarantee is 12 months from purchase date, proof of which will be required for any claim.

**INFORMATION:** For a copy of our latest catalogue and promotions call us on 01284 757525 and leave your full name and address, including postcode.

### HYDRAULIC PUMP



Issue: 2  
 Issue Date: 050413

ITEM	PART NO	DESCRIPTION	ITEM	PART NO	DESCRIPTION
301	PT1150SC2.301	SPRING CAP	320	PT1150SC2.320	ELASTIC PIN
302	PT1150SC2.302	SPRING	321	PT1150SC2.321	VALVE CARTRIDGE
303	PT1150SC2.303	PUMP PISTON	322	PT1150SC2.322	PUMP BODY
304	PT1150SC2.304	DUST RING	323	PT1150SC2.323	SEAL WASHER
305	PT1150SC2.305	SEAL	324	PT1150SC2.324	SCREW PLUG
306	PT1150SC2.306	DUST COVER	325	PT1150SC2.325	SEAL
307	PT1150SC2.307	LOCK RING	326	PT1150SC2.326	O-RING
308	PT1150SC2.308	WASHER	327	PT1150SC2.327	DUST RING
309	PT1150SC2.309	BEARING	328	PT1150SC2.328	PISTON ROD
310	PT1150SC2.310	LOADING WHEEL	329	PT1150SC2.329	STEEL BALL
311	PT1150SC2.311	ELASTIC PIN	330	PT1150SC2.330	SCREW PLUG
312	PT1150SC2.312	ELASTIC PIN	331	PT1150SC2.331	O-RING
313	PT1150SC2.313	THRUST PLATE	332	PT1150SC2.332	BOLT
314	PT1150SC2.314	RETAINING RING	333	PT1150SC2.333	SPRING
315	PT1150SC2.315	BEARING	334	PT1150SC2.334	SPINDLE OF SAFETY VALVE
316	PT1150SC2.316	SHAFT OF LOADING WHEEL	335	PT1150SC2.335	GREASE CUP
317	PT1150SC2.317	NUT	336	PT1150SC2.336	CYLINDER
318	PT1150SC2.318	SCREW	337	PT1150SC2.337	COVER OF BEARING
319	PT1150SC2.319	LEVEL PLATE			

**NOTE:** It is our policy to continually improve products and as such we reserve the right to alter data, specifications and component parts without prior notice.

**IMPORTANT:** No liability is accepted for incorrect use of product.

**WARRANTY:** Guarantee is 12 months from purchase date, proof of which will be required for any claim.

**INFORMATION:** For a copy of our latest catalogue and promotions call us on 01284 757525 and leave your full name and address, including postcode.