

Issue: 1
 Issue Date: 120813

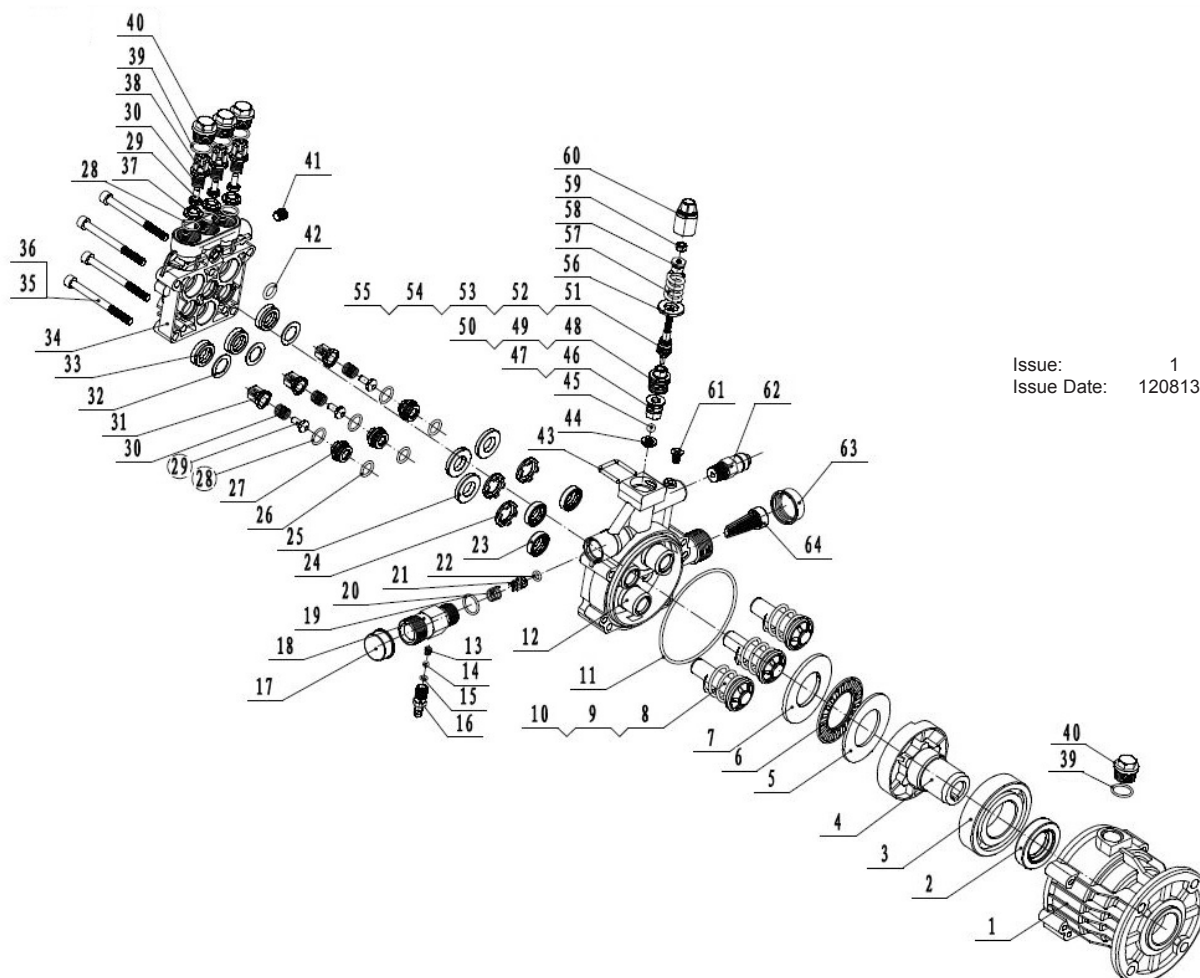
ITEM	PART NO	DESCRIPTION	ITEM	PART NO	DESCRIPTION
1	PWM1300.01	DRAIN HOSE	13	PWM1300.13	CROSS BOLT M5 X 35
2	PWM1300.02	THERMAL RELIEF CAP	14	PWM1300.14	WASHER
3	PWM1300.03	WATER INLET CONNECTOR	15	PWM1300.15	GUN HOLDER
4	PWM1300.04	ENGINE	16	PWM1300.16	LOCKNUT M5
5	PWM1300.05	PRESSURE GUN LANCE	17	PWM1300.17	LOCKNUT M8
6	PWM1300.06	HIGH PRESSURE GUN	18	PWM1300.18	RUBBER PLUG
7	PWM1300.07	PUMP ASSEMBLY	19	PWM1300.19	RUBBER FOOT
8	PWM1300.08	HEX BOLT (M8x25)	20	PWM1300.20	HEX BOLT (M8x40)
9	PWM1300.09	SPRING WASHER	21	PWM1300.21	FRAME
10	PWM1300.10	WASHER	22	PWM1300.22	ENGINE SUPPORT
11	PWM1300.11	INJECTION HOSE	23	PWM1300.23	HIGH PRESSURE HOSE
12	PWM1300.12	INJECTION FILTER	24	PWM1300.24	HOSE HOOK

NOTE: It is our policy to continually improve products and as such we reserve the right to alter data, specifications and component parts without prior notice.

IMPORTANT: No liability is accepted for incorrect use of product.

WARRANTY: Guarantee is 12 months from purchase date, proof of which will be required for any claim.

INFORMATION: For a copy of our latest catalogue and promotions call us on 01284 757525 and leave your full name and address, including postcode.



Issue: 1
Issue Date: 120813

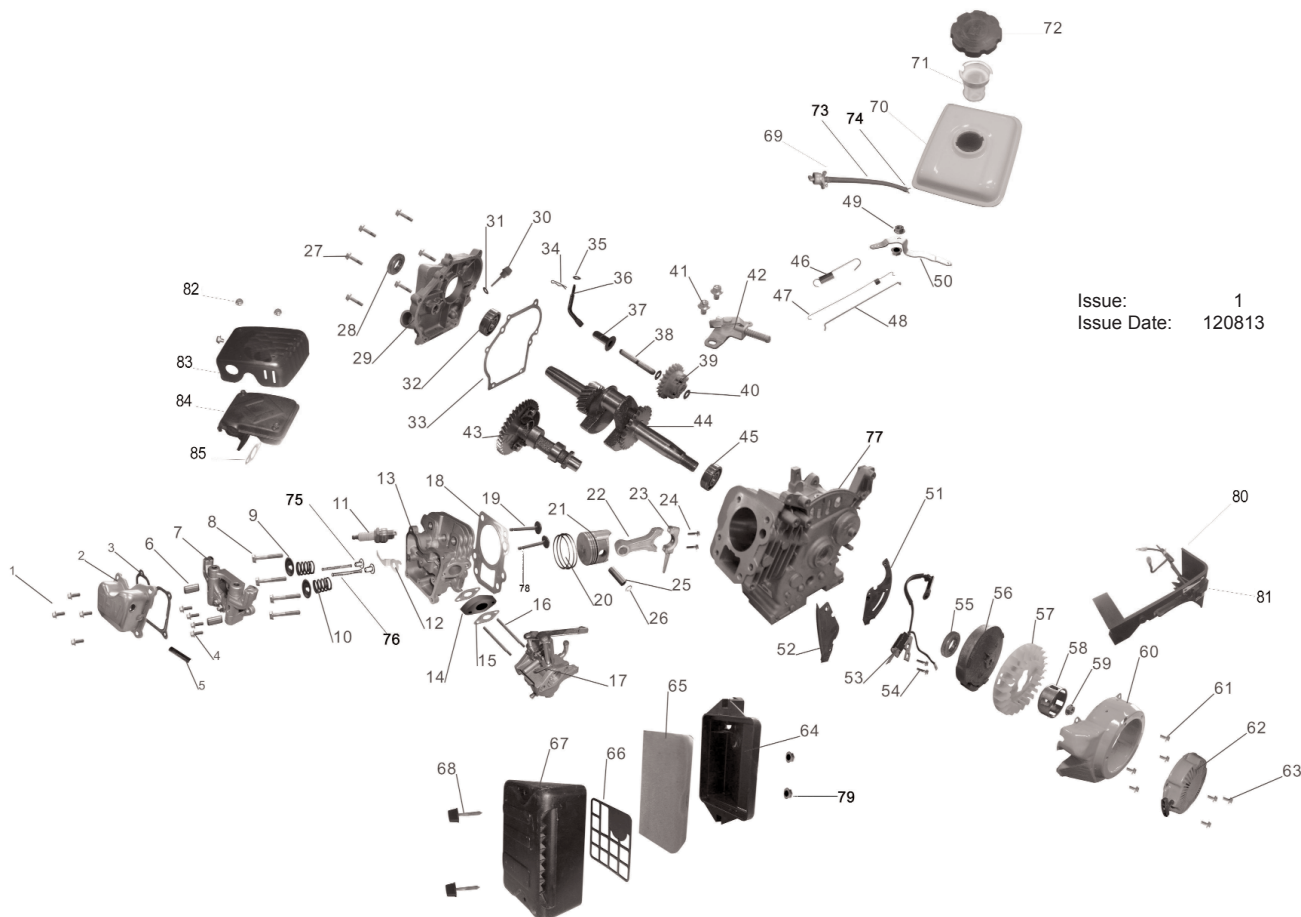
ITEM	PART NO	DESCRIPTION	ITEM	PART NO	DESCRIPTION	ITEM	PART NO	DESCRIPTION
1	PWM1300.P01	HOUSING	24	PWM1300.P24	SUPPORT GASKET	47	PWM1300.P47	O-RING 9.5x1.8
2	PWM1300.P02	OIL SEAL	25	PWM1300.P25	WASHER	48	PWM1300.P48	VALVE SLEEVE
3	PWM1300.P03	BEARING	26	PWM1300.P26	O-RING	49	PWM1300.P49	O-RING 14X1.8
4	PWM1300.P04	CAM	27	PWM1300.P27	VALVE SEAT	50	PWM1300.P50	O-RING 12.5X1.6
5	PWM1300.P05	ROLLER GASKET	28	PWM1300.P28	O-RING 12.4x1.8mm	51	PWM1300.P51	VALVE ROD ASSEMBLY
6	PWM1300.P06	ROLLER BEARING	29	PWM1300.P29	CHECK VALVE CORE	52	PWM1300.P52	CLIP RING (SMALL)
7	PWM1300.P07	COVER PLATE	30	PWM1300.P30	VALVE SPRING	53	PWM1300.P53	O-RING 6.07X1.8
8	PWM1300.P08	PISTON SPRING	31	PWM1300.P31	VALVE COVER	54	PWM1300.P54	CLIP RING (BIG)
9	PWM1300.P09	PISTON	32	PWM1300.P32	TEFLON GASKET	55	PWM1300.P55	O-RING 8.6X1.8
10	PWM1300.P10	SPRING SEAT	33	PWM1300.P33	Y SEAL	56	PWM1300.P56	PRESSURE ADJUSTING GASKET
11	PWM1300.P11	O-RING	34	PWM1300.P34	PUMP HEAD	57	PWM1300.P57	PRESSURE ADJUSTING SPRING
12	PWM1300.P12	PUMP SEAT	35	PWM1300.P35	HEX BOLT (M6x70)	58	PWM1300.P58	PRESSURE ADJUSTING NUT
13	PWM1300.P13	CONE SPRING	36	PWM1300.P36	SPRING WASHER	59	PWM1300.P59	NUT
14	PWM1300.P14	STEEL BALL 5mm	37	PWM1300.P37	VALVE SEAT	60	PWM1300.P60	VALVE SHEATH
15	PWM1300.P15	O-RING 4x1.5	38	PWM1300.P38	VALVE COVER	61	PWM1300.P61	BOLT M6X10mm
16	PWM1300.P16	CHECK VALVE BODY	39	PWM1300.P39	O-RING 15.4X1.8	62	PWM1300.P62	THERMAL RELIEF CAP
17	PWM1300.P17	WATER OUTLET COVER	40	PWM1300.P40	PLUG SCREW	63	PWM1300.P63	WATER INLET COVER
18	PWM1300.P18	WATER OUTLET CONNECTOR	41	PWM1300.P41	GRUB SCREW	64	PWM1300.P64	INLET FILTER
19	PWM1300.P19	O-RING	42	PWM1300.P42	O-RING 10X2.65			
20	PWM1300.P20	NON-RETURN VALVE SPRING	43	PWM1300.P43	U-PIN			
21	PWM1300.P21	NON-RETURN VALVE ROD	44	PWM1300.P44	LOWER SEAT			
22	PWM1300.P22	O-RING 5x2	45	PWM1300.P45	STEEL BALL 7mm			
23	PWM1300.P23	SEALING RING	46	PWM1300.P46	UPPER SEAT			

NOTE: It is our policy to continually improve products and as such we reserve the right to alter data, specifications and component parts without prior notice.

IMPORTANT: No liability is accepted for incorrect use of product.

WARRANTY: Guarantee is 12 months from purchase date, proof of which will be required for any claim.

INFORMATION: For a copy of our latest catalogue and promotions call us on 01284 757525 and leave your full name and address, including postcode.



Issue: 1
Issue Date: 120813

ITEM	PART NO	DESCRIPTION	ITEM	PART NO	DESCRIPTION	ITEM	PART NO	DESCRIPTION
1	PWM1300.E01	HEX FLANGE BOLT	29	PWM1300.E29	CRANKCASE COVER	55	PWM1300.E55	OIL SEAL
2	PWM1300.E02	HEAD COVER	30	PWM1300.E30	OIL LEVEL INDICATOR	56	PWM1300.E56	FLYWHEEL ASSEMBLY
3	PWM1300.E03	HEAD GASKET	31	PWM1300.E31	RUBBER GASKET	57	PWM1300.E57	COOLING FAN
4	PWM1300.E04	HEX FLANGE BOLT	32	PWM1300.E32	BEARING	58	PWM1300.E58	WHEEL SLEEVE
5	PWM1300.E05	BREATHER TUBE	33	PWM1300.E33	HEAD COVER GASKET	59	PWM1300.E59	FLYWHEEL NUT
6	PWM1300.E06	DOWEL PIN	34	PWM1300.E34	ROCKER SPRING LOCK	60	PWM1300.E60	FAN COVER
7	PWM1300.E07	ROCKER ARM	35	PWM1300.E35	ROCKER GASKET	61	PWM1300.E61	HEX FLANGE BOLT
8	PWM1300.E08	CYLINDER HEAD BOLT	36	PWM1300.E36	REGULATOR ARM	62	PWM1300.E62	RECOIL STARTER ASS'Y
9	PWM1300.E09	VALVE SPRING RETAINER	37	PWM1300.E37	SLIDING SLEEVE	63	PWM1300.E63	HEX FLANGE BOLT
10	PWM1300.E10	VALVE SPRING	38	PWM1300.E38	ROCKER	64	PWM1300.E64	AIR CLEANER ASS'Y
11	PWM1300.E11	SPARK PLUG	38A	PWM1300.E38A	SLIDING SLEEVE AXLE	69	PWM1300.E69	FUEL TANK SWITCH
12	PWM1300.E12	GUIDE PLATE	39	PWM1300.E39	GOVERNOR GEAR ASS'Y	70	PWM1300.E70	FUEL TANK
13	PWM1300.E13	CYLINDER HEAD	40	PWM1300.E40	GOVERNOR GEAR GASKET	71	PWM1300.E71	FUEL TANK FILTER
14	PWM1300.E14	CARBURETOR INSULATOR	41	PWM1300.E41	PAN HEAD SCREW	72	PWM1300.E72	FUEL TANK CAP
15	PWM1300.E15	CARBURETOR GASKET	42	PWM1300.E42	POWER GOVERNOR SET ASS'Y	73	PWM1300.E73	FUEL PIPE
16	PWM1300.E16	STUD BOLT	43	PWM1300.E43	CAMSHAFT ASSEMBLY	74	PWM1300.E74	SPRING LOCK
17	PWM1300.E17	CARBURETOR ASSEMBLY	44	PWM1300.E44	CRANKSHAFT ASS'Y	75	PWM1300.E75	INTAKE VALVE SEAT
18	PWM1300.E18	CYLINDER HEAD GASKET	45	PWM1300.E45	BEARING	76	PWM1300.E76	INTAKE VALVE
19	PWM1300.E19	EXHAUST VALVE	46	PWM1300.E46	GOVERNOR SPRING	77	PWM1300.E77	CRANKCASE
20	PWM1300.E20	PISTON RING SET	47	PWM1300.E47	THROTTLE SPRING	78	PWM1300.E78	EXHAUST VALVE
21	PWM1300.E21	PISTON	48	PWM1300.E48	THROTTLE ARM	79	PWM1300.E79	HEX FLANGE NUT
22A	PWM1300.E22A	CON-ROD	49	PWM1300.E49	FUEL TANK SWITCH	80	PWM1300.E80	WIRE CLIP
24	PWM1300.E24	HEX FLANGE BOLT	50	PWM1300.E50	GOVERNOR ARM	81	PWM1300.E81	GOVERNOR SEAT BRACKET
25	PWM1300.E25	PISTON PIN	51	PWM1300.E51	FLYWHEEL SIDE PLATE	82	PWM1300.E82	PAN HEAD SCREW
26	PWM1300.E26	PISTON PIN CLIP	52	PWM1300.E52	FLYWHEEL SIDE PLATE	83	PWM1300.E83	MUFFLER ASS'Y
27	PWM1300.E27	FLANGE BOLT	53	PWM1300.E53	IGNITION ASS'Y	85	PWM1300.E85	MUFFLER GASKET
28	PWM1300.E28	OIL SEAL	54	PWM1300.E54	HEX FLANGE BOLT			

NOTE: It is our policy to continually improve products and as such we reserve the right to alter data, specifications and component parts without prior notice.

IMPORTANT: No liability is accepted for incorrect use of product.

WARRANTY: Guarantee is 12 months from purchase date, proof of which will be required for any claim.

INFORMATION: For a copy of our latest catalogue and promotions call us on 01284 757525 and leave your full name and address, including postcode.