

Issue: 1
Issue Date: 021013

ITEM	PART NO	DESCRIPTION	ITEM	PART NO	DESCRIPTION
1	PWM2500SP.F01	FRAME NOZZLE	25	PWM2500SP.F25	WHEEL AXLE
2	PWM2500SP.F02	FRAME NOZZLE SLEEVE	26	PWM2500SP.F26	WHEEL
3	PWM2500SP.F03	LOCK NUT (M6)	27	PWM2500SP.F27	FLAT WASHER 16mm
4	PWM2500SP.F04	HOSE HOOK	28	PWM2500SP.F28	CIRCLIP
5	PWM2500SP.F05	FLAT WASHER 6mm	29	PWM2500SP.F29	WATER SUCTION FILTER
6	PWM2500SP.F06	SCREW (M6x45)	31	PWM2500SP.F31	DRAIN PIPE
7	PWM2500SP.F07	HIGH PRESSURE HOSE	32	PWM2500SP.F32	SCREW (M8x25)
8	PWM2500SP.F08	PETROL ENGINE 6.5hp	33	PWM2500SP.F33	PUMP ASSEMBLY
9	PWM2500SP.F09	LOCK NUT (M8)	34	PWM2500SP.F34	DETERGENT HOLDER
10	PWM2500SP.F10	FLAT WASHER 8mm	35	PWM2500SP.F35	LOCK NUT (M8)
11	PWM2500SP.F11	LOCK NUT (M6)	36	PWM2500SP.F36	GUN HOOK SHEATH
12	PWM2500SP.F12	FLAT WASHER 6mm	37	PWM2500SP.F37	PRESSURE GUN
13	PWM2500SP.F13	SCREW (M6x40)	38	PWM2500SP.F38	GUN HOOK
14	PWM2500SP.F14	ENGINE MOUNT RUBBER GASKET	39	PWM2500SP.F39	UPPER FRAME
15	PWM2500SP.F15	FRAME BASE	40	PWM2500SP.F40	FLAT WASHER 8mm
16	PWM2500SP.F16	LOCK NUT (M8)	41	PWM2500SP.F41	WATER FILTER
17	PWM2500SP.F17	RUBBER FOOT	42	PWM2500SP.F42	WATER INLET
18	PWM2500SP.F18	WASHER	43	PWM2500SP.F43	INJECTION HOSE
19	PWM2500SP.F19	SCREW (M8x45)	44	PWM2500SP.F44	PUMP ASSEMBLY
20	PWM2500SP.F20	RUBBER PLUG	45	PWM2500SP.F45	DETERGENT HOLDER
21	PWM2500SP.F21	SCREW (M8x40)	46	PWM2500SP.F46	LOCK NUT (M8)
22	PWM2500SP.F22	RUBBER PLUG	47	PWM2500SP.F47	GUN HOOK SHEATH
23	PWM2500SP.F23	CLIP			
24	PWM2500SP.F24	R-RIN			

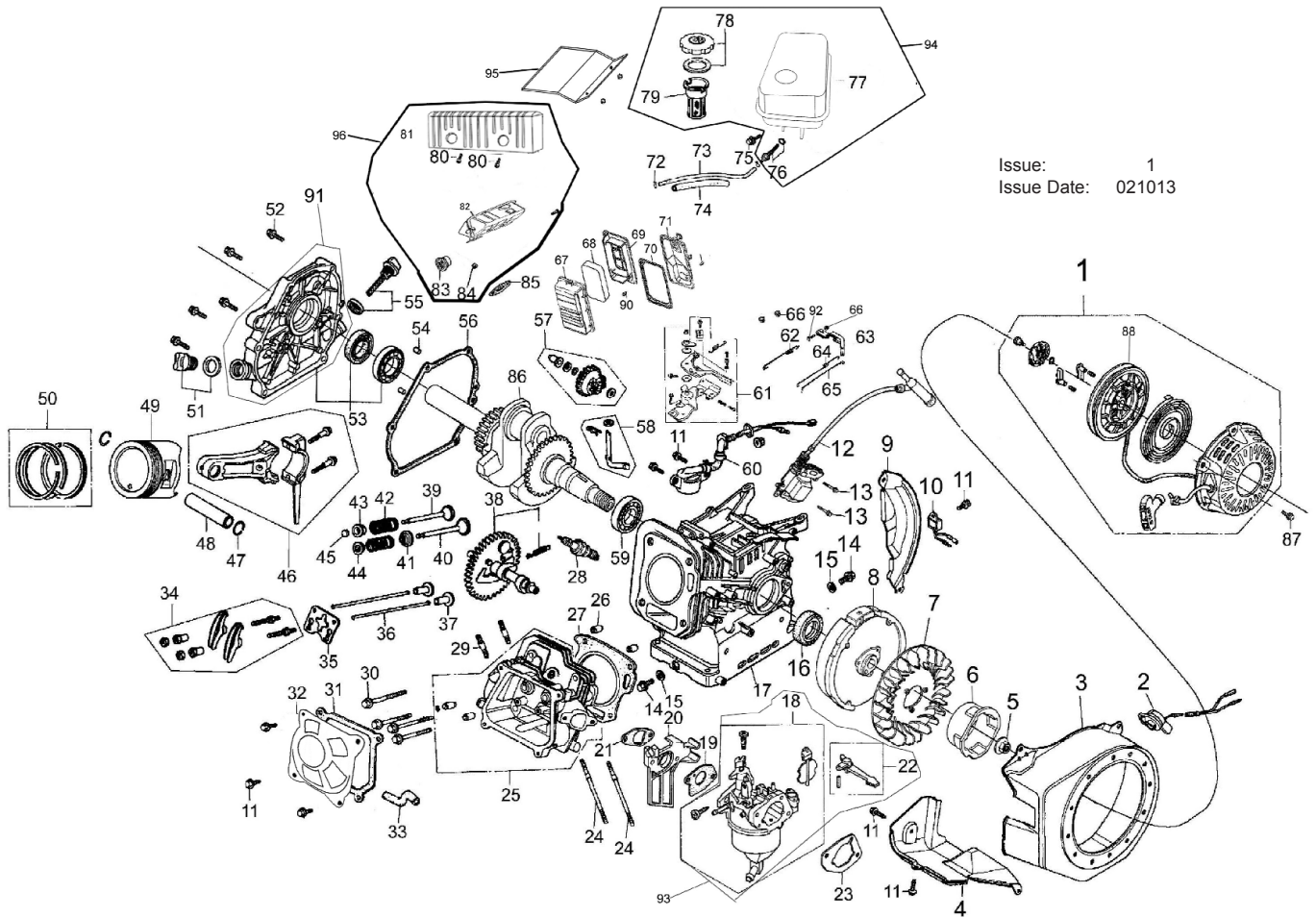
NOTE: It is our policy to continually improve products and as such we reserve the right to alter data, specifications and component parts without prior notice.

IMPORTANT: No liability is accepted for incorrect use of product.

WARRANTY: Guarantee is 12 months from purchase date, proof of which will be required for any claim.

INFORMATION: For a copy of our latest catalogue and promotions call us on 01284 757525 and leave your full name and address, including postcode.

Issue: 1
 Issue Date: 021013



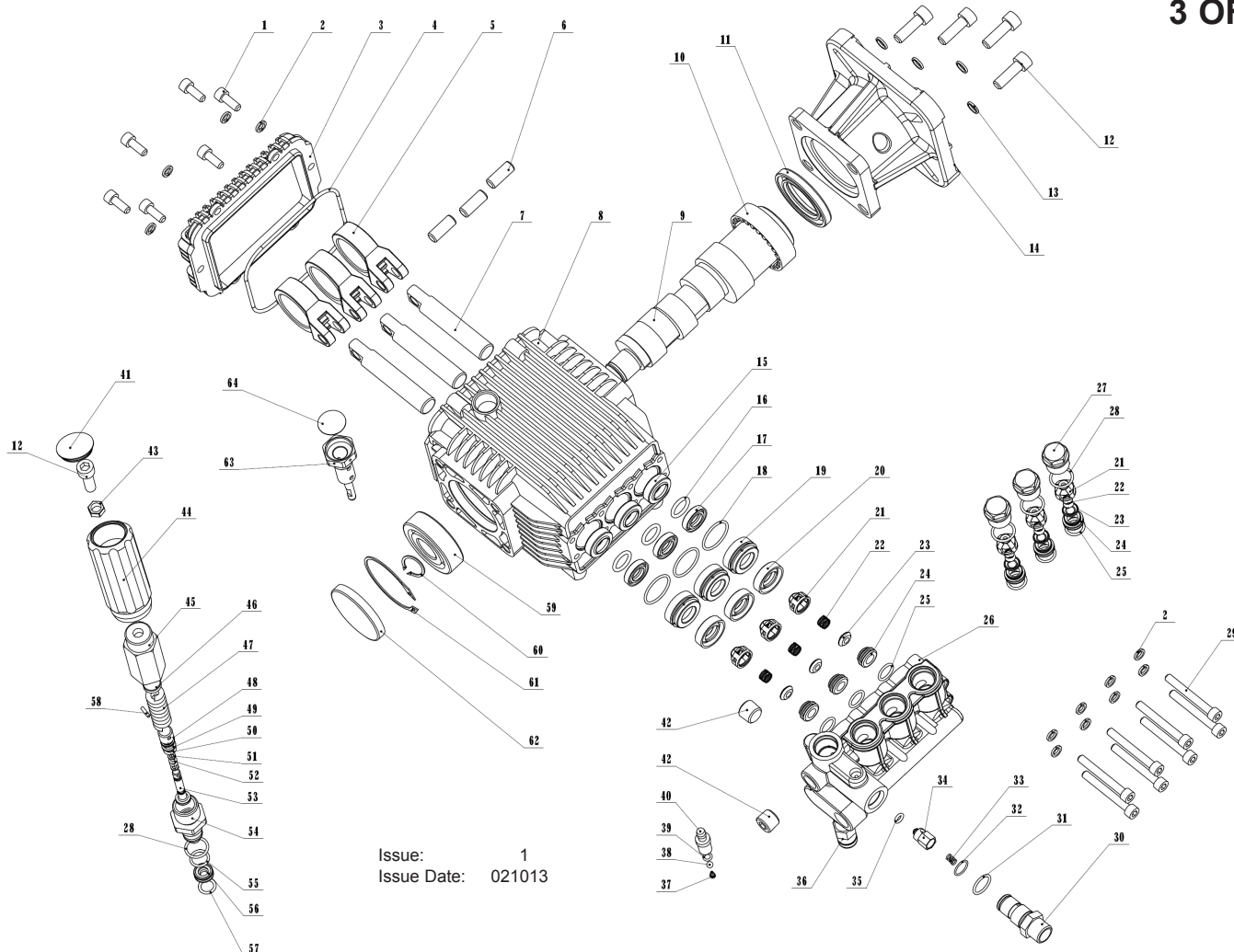
ITEM	PART NO	DESCRIPTION	ITEM	PART NO	DESCRIPTION	ITEM	PART NO	DESCRIPTION
1	PWM2500SP.E01	RECOIL STARTER COMPLETE	33	PWM2500SP.E33	BREATHER	65	PWM2500SP.E65	GOVERNOR ROD
2	PWM2500SP.E02	ENGINE SWITCH	34	PWM2500SP.E34	VALVE ROCKER ARM ASS'Y	66	PWM2500SP.E66	NUT (M6)
3	PWM2500SP.E03	FAN COVER COMPLETE	35	PWM2500SP.E35	PUSHROD GUIDE PLATE	67	PWM2500SP.E67	AOR CLEANER CASE COMP.
4	PWM2500SP.E04	SHROUD COMPLETE	36	PWM2500SP.E36	PUSHROD	68	PWM2500SP.E68	AIR CLEANER SEPARATOR
5	PWM2500SP.E05	FLANGE NUT M14	37	PWM2500SP.E37	VALVE LIFTER	69	PWM2500SP.E69	AIR CLEANER ELEMENT
6	PWM2500SP.E06	STARTER PULLEY	38	PWM2500SP.E38	CAMSHAFT ASS'Y	70	PWM2500SP.E70	AIR CLEANER COVER
7	PWM2500SP.E07	COOLING FAN	39	PWM2500SP.E39	VALVE, EXHAUST	71	PWM2500SP.E71	AIR CLEANER SET
8	PWM2500SP.E08	FLYWHEEL COMPLETE	40	PWM2500SP.E40	VALVE, INTAKE	72	PWM2500SP.E72	OIL TUBE CLIP
9	PWM2500SP.E09	SIDE PLATE	41	PWM2500SP.E41	VALVE SPRING SEAT	73	PWM2500SP.E73	OIL TUBE (4x8x150)
10	PWM2500SP.E10	DIODE	42	PWM2500SP.E42	VALVE SPRING	75	PWM2500SP.E75	SCREW (M6x28)
11	PWM2500SP.E11	FLANGE BOLT (M6x12)	43	PWM2500SP.E43	VALVE SPRING RETAINER, EX	76	PWM2500SP.E76	FUEL TANK JOINT
12	PWM2500SP.E12	IGNITION COIL ASS'Y	44	PWM2500SP.E44	VALVE SPRING RETAINER, IN	77	PWM2500SP.E77	FUEL TANK
13	PWM2500SP.E13	FLANE BOLT (M6x25)	45	PWM2500SP.E45	VALVE ROTATOR	78	PWM2500SP.E78	FUEL TANK CAP
14	PWM2500SP.E14	DRAIN BOLT	46	PWM2500SP.E46	PISTON PIN	79	PWM2500SP.E79	FUEL FILTER
15	PWM2500SP.E15	DRAIN WASHER	47	PWM2500SP.E47	PISTON PIN CLIP	80	PWM2500SP.E80	TAPPING SCREW (M5x8)
16	PWM2500SP.E16	OIL SEAL (25x41.25x6)	48	PWM2500SP.E48	PISTON PIN	81	PWM2500SP.E81	MUFFLER PROTECTOR
17	PWM2500SP.E17	CRANKCASE ASS'Y	49	PWM2500SP.E49	PISTON	82	PWM2500SP.E82	MUFFLER
18	PWM2500SP.E18	CARBURETOR ASS'Y	50	PWM2500SP.E50	PISTON RING SET	83	PWM2500SP.E83	SPARK PLUG
19	PWM2500SP.E19	CARBURETOR PACKING	51	PWM2500SP.E51	OIL CAP	84	PWM2500SP.E84	NUT (M8)
20	PWM2500SP.E20	CARBURETOR INSULATOR	52	PWM2500SP.E52	FLANGE BOLT (M8x32)	85	PWM2500SP.E85	FUEL PIPE, EX
21	PWM2500SP.E21	INSULATOR PACKING	53	PWM2500SP.E53	OIL SEAL (25x41.25x6)	86	PWM2500SP.E86	CRANKSHAFT COMPLETE
22	PWM2500SP.E22	CHOKE LEVEL COMPLETE	54	PWM2500SP.E54	DOWEL PIN (8x14)	87	PWM2500SP.E87	SCREW (M6x12)
23	PWM2500SP.E23	AIR CLEANER PACKING	55	PWM2500SP.E55	OIL FILLER CAP ASS'Y	88	PWM2500SP.E88	RATCHET GUIDE PLATE
24	PWM2500SP.E24	BOLT HEAD (M6x112)	56	PWM2500SP.E56	CASE COVER PACKING	89	PWM2500SP.E89	SCREW (M6x12)
25	PWM2500SP.E25	CYLINDER HEAD COMPLETE	57	PWM2500SP.E57	GOVERNOR ASS'Y	90	PWM2500SP.E90	SCREW (M6x12)
26	PWM2500SP.E26	DOWEL PIN (10x16)	58	PWM2500SP.E58	GOVERNOR SHAFT ASS'Y	91	PWM2500SP.E91	CRANKCASE COVER ASS'Y
27	PWM2500SP.E27	CYLINDER HEAD GASKET	59	PWM2500SP.E59	RADIAL BEARING (6025)	92	PWM2500SP.E92	SCREW (M6x21)
28	PWM2500SP.E28	SPARK PLUG	60	PWM2500SP.E60	OIL LEVEL SWITCH ASS'Y	93	PWM2500SP.E93	CARBURETOR ASS'Y
29	PWM2500SP.E29	BOLT HEAD (M8x35)	61	PWM2500SP.E61	CONTROL ASS'Y	94	PWM2500SP.E94	FUEL TANK ASS'Y
30	PWM2500SP.E30	FLANGE BOLT (M8x55)	62	PWM2500SP.E62	GOVERNOR SPRING	95	PWM2500SP.E95	FUEL TANK SUPPORT
31	PWM2500SP.E31	CYLINDER HEAD COVER GASKET	63	PWM2500SP.E63	GOVERNOR ARM	96	PWM2500SP.E96	MUFFLER ASS'Y
32	PWM2500SP.E32	CYLINDER HEAD COVER COMP.	64	PWM2500SP.E64	THROTTLE RETURN SPRING			

NOTE: It is our policy to continually improve products and as such we reserve the right to alter data, specifications and component parts without prior notice.

IMPORTANT: No liability is accepted for incorrect use of product.

WARRANTY: Guarantee is 12 months from purchase date, proof of which will be required for any claim.

INFORMATION: For a copy of our latest catalogue and promotions call us on 01284 757525 and leave your full name and address, including postcode.



Issue: 1
 Issue Date: 021013

ITEM	PART NO	DESCRIPTION	ITEM	PART NO	DESCRIPTION	ITEM	PART NO	DESCRIPTION
1	PWM2500SP.P01	HEX SCREW (M6x16)	23	PWM2500SP.P23	CHECK VALVE PLATE	45	PWM2500SP.P45	VALVE COVER
2	PWM2500SP.P02	SPRING WASHER (6mm)	24	PWM2500SP.P24	SUPPORT RING	46	PWM2500SP.P46	SPRING SEAT
3	PWM2500SP.P03	CRANK CASE COVER	25	PWM2500SP.P25	O-RING (12.4x1.8)	47	PWM2500SP.P47	PRESSURE ADJUSTING SPRING
4	PWM2500SP.P04	CRANKCASE COVER SEAL	26	PWM2500SP.P26	PUMP BLOCK	48	PWM2500SP.P48	VALVE HEAD
5	PWM2500SP.P05	PLUNGER CONNECTING RING	27	PWM2500SP.P27	PLUG	49	PWM2500SP.P49	CHECK RING (8x11x1.3)
6	PWM2500SP.P06	LOCATING PIN	28	PWM2500SP.P28	O-RING (15.4x1.8)	50	PWM2500SP.P50	O-RING (6.6x1.8)
7	PWM2500SP.P07	PLUNGER	29	PWM2500SP.P29	OUTLET CONNECTOR	51	PWM2500SP.P51	CHECK RING (3.1x6x1.3)
8	PWM2500SP.P08	CRANK CASE	30	PWM2500SP.P30	O-RING (14x1.8)	52	PWM2500SP.P52	O-RING (3.1x6x1.3)
9	PWM2500SP.P09	CRANK SHAFT	31	PWM2500SP.P31	O-RING (12.4x1.8)	53	PWM2500SP.P53	VALVE CORE
10	PWM2500SP.P10	NEEDLE ROLLER BEARING (NK455216)	32	PWM2500SP.P32	VALVE SPRING	54	PWM2500SP.P54	VALVE SHEATH
11	PWM2500SP.P11	CRANK SHAFT OIL SEAL (40x52x7)	33	PWM2500SP.P33	CHECK VALVE ROD	55	PWM2500SP.P55	BYPASS VALVE SEAT
12	PWM2500SP.P12	HEX BOLT (M8x25)	34	PWM2500SP.P34	O-RING (5x2)	56	PWM2500SP.P56	O-RING (10x2)
13	PWM2500SP.P13	SPRING WASHER (8mm)	35	PWM2500SP.P35	THERMAL RELIEF	57	PWM2500SP.P57	PIN
14	PWM2500SP.P14	CONNECTING FLANGE	36	PWM2500SP.P36	PROTECTOR	58	PWM2500SP.P58	BEARING (304)
15	PWM2500SP.P15	PLUNGER OIL SEAL (15x25x7)	37	PWM2500SP.P37	VALVE SPRING	59	PWM2500SP.P59	CIRCLIP
16	PWM2500SP.P16	O-RING (14x2.6)	38	PWM2500SP.P38	STEEL BALL (5mm)	60	PWM2500SP.P60	CIRCLIP
17	PWM2500SP.P17	Y-SEAL (15x22x5)	39	PWM2500SP.P39	O-RING (4x1.5)	61	PWM2500SP.P61	END COVER
18	PWM2500SP.P18	O-RING (23x1.8)	40	PWM2500SP.P40	CHECK VALVE BODY	62	PWM2500SP.P62	DIPSTICK
19	PWM2500SP.P19	GUIDE SLEEVE	41	PWM2500SP.P41	HANDLE COVER	63	PWM2500SP.P63	DIPSTICK COVER
20	PWM2500SP.P20	WATER SEAL (15x25x7)	42	PWM2500SP.P42	SEALING SCREW	64	PWM2500SP.P64	
21	PWM2500SP.P21	CHECK VALVE COVER	43	PWM2500SP.P43	HEX NUT (M8)			
22	PWM2500SP.P22	CHECK VALVE SPRING	44	PWM2500SP.P44	PRESSURE ADJUSTING HANDLE			

NOTE: It is our policy to continually improve products and as such we reserve the right to alter data, specifications and component parts without prior notice.

IMPORTANT: No liability is accepted for incorrect use of product.

WARRANTY: Guarantee is 12 months from purchase date, proof of which will be required for any claim.

INFORMATION: For a copy of our latest catalogue and promotions call us on 01284 757525 and leave your full name and address, including postcode.