

FOOT PROTECTION

Parweld's Panther footwear protects the user against typical safety risk whilst providing lasting comfort.

All Parweld footwear is tested and certified to BS EN ISO 20345:2011 SB.

DEFINITIONS

Definition BS EN ISO 20345:2011:

The product must:

- Conform to the Basic Safety Level
- Protect the Wearers Toes Against Mechanical Risk
- Tested with 200 Joules Impact Energy and 15000 Newton's Compression Force.

Joule – A unit of energy equal to the work done when applying a force of 1 Newton through a distance of 1 metre.

Newton – A unit of force equal to the force that produces an acceleration of 1 metre per second on a mass of 1 kilogram.

All Footwear is classified as follows:

CLASS I FOOTWEAR: The upper is produced from material other than rubber or polymeric materials

S1 = Safety Basic + Closed Seat Region + Antistatic + Energy Absorption Of The Seat Region + Fuel Oil Resistant Out-soles

S2 = As S1 Plus: Water Resistance Of The Upper

S3 = As S2 Plus: Penetration Resistance Of The Out sole + Cleated Out-soles

Additional foot protection may be provided and these marking codes identify the protection offered.

Protective Properties	Marking code	Marking Symbol
Penetration Resistance of the Outer-sole	P	
Energy Absorption of the Seat Region	E	
Water Resistance – Resistance to Water Penetration	WR	
Slip Resistance – Ceramic Floor with Sodium Laurel Sulphate Lubricant	SRA	
Slip Resistance – Steel Floor with Glycerol Lubricant	SRB	
Slip Resistance – Footwear Meeting both SRA and SRB Requirements	SRC	
Antistatic – Protection 0.1 to 1000 Mega Ohms Resistance	A	
Uppers – Water Resistant Upper Materials		
Out-soles – Resistance to Fuel Oil		
Out-soles – Heat Resistant	HRO	

PANTHER WELDERS BOOT

Stock Code
P414XX*



FEATURES

- S3 Protection
- WR Water Resistance
- SRC Slip Resistance
- HRO Heat Resistant Outsole
- HI/CI Heat and Cold Resistance
- Resistant to Heat Transfer Through Weld Splashes
- Steel Epoxy Coated Toe Cap
- Stainless Steel Midsole
- Anti-Static
- Welding Specific Upper Design
- Flame Resistant Upper and Thread
- Heel Energy Absorption
- Fuel Oil Resistant Sole
- Closed Seat
- Cleated Out-Sole

STANDARDS

- Tested and Certified to BS EN 20345:2011 and BS EN 20349:2010



***Note:** XX depicts shoe size,
i.e add 09 for size 9, 10 for size 10

HAND PROTECTION

Parweld's range of leather and handling gloves offers the user protection against mechanical hazards such as abrasion, cut resistance tear resistance and puncture resistance.

All Parweld gloves are tested and certified to BS EN 420, BS EN 388, BS EN 407, CE certified and certified by a third party notifying body.

DEFINITIONS

CAT 1: BS EN 420 Simple Design:

The Product Must:

- Protect against minimal risks and can only be used where any gradual increases of risk can be easily identified in advance by the user
- Be identified with CE logo only
- This standard is designed to ensure that the gloves themselves do not cause harm to the wearer and are comfortable to wear. Tests and requirements include the PH and Chrome VI content of leather, plus water vapour transmission and absorption of materials. In addition, procedures to examine the sizing of the glove and its effect on finger dexterity are covered,


plus general requirements for the information to be supplied with and marked on the glove.

CAT 2: Intermediate Design:

The product must:

- Be tested and technically approved by an authorised testing body.
- The CE markings and labelling will consist of the CE mark, the certifying body's approval number, the EN Standard Product it Conforms to, Pictograms and Test performance.
- All Parweld Leather gloves are CAT 2 certified.

BS EN 388 Standard: The product must be tested for the following:

 a b c d The 'mechanical risks' pictogram is accompanied by a 4-digit code.	Test	Min Level	Highest Performance Achievable
	a. Abrasion Resistance	1	4
	b. Blade Cut Resistance	1	5
	c. Tear Resistance	1	4
	d. Puncture Resistance	1	4

BS EN 407 Standard: The product must be tested for the following:

 a b c d e f The 'heat and flame' pictogram is accompanied by a 6-digit number.	Test	Min Level	Highest Performance Achievable
	a. Resistance to Flammability	1	4
	b. Contact Heat Resistance	1	5
	c. Convective Heat Resistance	1	4
	d. Radiant Heat Resistance	1	4
	e. Resistance to Small Splashes of Molten Metal	1	4
	f. Resistance to Large Quantities of Molten Metal	1	4

*A performance level is only shown if a performance level of 3 or 4 is obtained in the flammability test.

FINDING THE CORRECT SIZE

Ordering the right size is important for ensuring the gloves are comfortable and offer the fit for the intended purpose. Tight gloves can promote fatigue, whereas gloves that are too large can impair dexterity. To ensure the best fit please use the sizing chart.

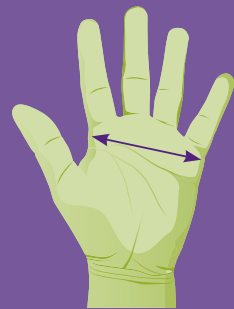
You should always measure the hand you use the most for example if you are right handed measure your right hand using the Guide below to establish your correct size.

Measuring the hand in this way will not guarantee a 100% perfect fit due to all possible variations in hand size.

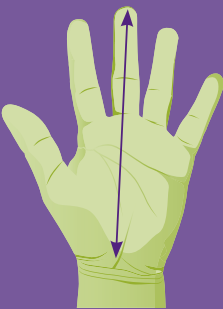
Some workers, for example, may have long fingers, while others will have short fingers.

Workers may find gloves that are one-half or even a full size larger or smaller than the measured hand size fit more comfortably.

It is common to choose a slightly smaller glove when carrying out more dexterous or intricate tasks.



A: Measure around the top of your palm as shown above. Do not include the thumb in this measurement.



B: Measure the tip of the middle finger to the base of the Palm.

	Size	8 (Small)	9 (Medium)	10 (Large)	11 (X Large)
A	Inches	8"	9"	10"	11"
	Cms	20.5cm	23cm	26cm	28.5cm
B	Inches	7"	7.5"	8"	8.5"
	Cms	18.2cm	19.2cm	20.4cm	21.5cm

Use the largest of A and B to denote size.

PANTHER GAUNTLET

COW SPLIT LEATHER

Stock Code P3825

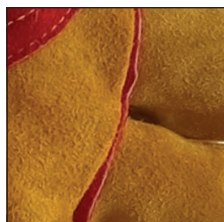
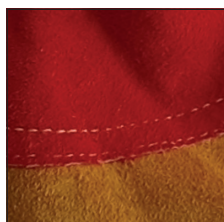
Size 10



4244



313X3X



FEATURES

- Double Kevlar® Stitched
- Reinforced Palm and Thumb
- 'A' Grade Leather
- Minimum Palm Thickness 1.2mm
- Fully Lined and Fully Weltd
- Extra Length Cuff (19cm)

STANDARDS

- BS EN 388:2003
- BS EN 420:2003
- BS EN 12477:2001
- BS EN 407:2004



4244



313X3X

PANTHER FINGERTIP SENSITIVITY TIG GLOVE

GOAT SKIN WITH COW HIDE CUFF

Stock Code P3838

Size 10



1111



41XX2X



FEATURES

- Reinforced Thumb
- Reinforced Wrist Patch
- Extra Long Cuff (15cm)

STANDARDS

- BS EN 388:2003
- BS EN 407:2004
- BS EN 12477:2001
- BS EN 420:2003



1111



41XX2X

PANTHER DRIVERS GLOVE

COW HIDE GRAIN LEATHER

Stock Code P3855

Size 10



4133



PPE

FEATURES

- Fully Lined For Extra Comfort
- Key Set Thumb For Extra Movement And Flexibility
- Rolled Hem
- Elasticated Back

STANDARDS

- BS EN 388:2003



4133

PANTHER CANADIAN RIGGER GLOVE

COW SKIN AND COTTON

Stock Code P3805

Size 10



4133

PPE



FEATURES

- Premium Split Cow Skin
- 50mm Reinforced Cuff Incorporating Vein Patch
- Minimum Palm Thickness 1.2mm
- Hi-Viz Strip On Knuckle Protection

STANDARDS

- BS EN 388:2003



4133



WELDERS GAUNTLET

COW SPLIT LEATHER

Stock Code P3820

Size 10

FEATURES

- One Piece Back
- Fully Lined
- Minimum Palm Thickness 1.2mm

STANDARDS

- BS EN 388:2003
- BS EN 407:2004
- BS EN 12477:2001
- BS EN 420:2003



1111



212X1X



TIG GLOVE

GOAT SKIN WITH COW HIDE CUFF

Stock Code P3835

Size 10

FEATURES

- Reinforced Thumb
- Reinforced Wrist Patch
- Extra Long Cuff (15cm)

STANDARDS

- BS EN 388:2003
- BS EN 407:2004
- BS EN 12477:2001
- BS EN 420:2003



1111



212X1X



TIG GLOVE

GOAT SKIN

Stock Code P3830

Size 10

FEATURES

- Extra Long Cuff (15cm)

STANDARDS

- BS EN 388:2004
- BS EN 407:2004
- BS EN 12477:2001
- BS EN 420:2003



1111



212X1X



POWER RIGGER GLOVE (S3)

COW SPLIT LEATHER

Stock Code P3802

Size 10

FEATURES

- Shoulder Split Leather
- Rubberised Cuff
- Elasticated Back
- Fully Lined For Extra Comfort

STANDARDS

- BS EN 388:2003
- BS EN 420:2003



1111



DOUBLE PALM RIGGER GLOVE

COW SPLIT LEATHER

Stock Code P3801

Size 10

FEATURES

- Shoulder Split Leather
- Double Palm Finger and Thumb
- Rubberised Cuff
- Elasticated Back
- Fully Lined For Extra Comfort

STANDARDS

- BS EN 388:2004
- BS EN 420:2003



3242



CUT 5 GLOVE

13G HPPE YARN WITH PU PALM COATING

Stock Code P3845

Sizes 9, 10 and 11

FEATURES

- Enhanced Cut Protection (5)
- Perfect for Handling Hazards Within Industry
- Light Flexible PU Palm Coating
- Knitted Wrist
- Abrasion Resistance

STANDARDS

- BS EN 388:2003



4543



PU GRIPPER GLOVE

PU COATED NYLON 13 G

Stock Code P3860

Size 8, 9, 10 and 11

FEATURES

- Ideal For Light Handling
- P U Coating For Grip And Abrasion Resistance
- Knitted Wrist
- Light Flexible PU Palm Coating

STANDARDS

- BS EN 388:2003



4131

NITRILE GRIPPER GLOVE LITE

NITRILE COATED NYLON 13 G

Stock Code P3870

Size 8, 9, 10 and 11

FEATURES

- Ideal For Light Handling
- Light Flexible Nitrile Palm Coating
- Abrasion Resistance
- Double Density Form Nitrile Coating
- Knitted Wrist
- Oil And Grease Resistance

STANDARDS

- BS EN 388:2003



4121



THERMAL GRIPPER LATEX GLOVE

LATEX

Stock Code P3840

Size 8, 9, 10 and 11

FEATURES

- Ideal For Outdoor And Cold Store Applications
- Textured Latex Palm Coating For Superb Grip
- Ribbed Knitted Wrist
- Brushed Terry Lining For Added Comfort and Warmth
- General Handling
- Knitted Wrist
- Abrasion Resistance

STANDARDS

- BS EN 388:2003



2241

SPARK PROTECTION

Parweld's safety apparel offers the users protection against hazards in the workplace.

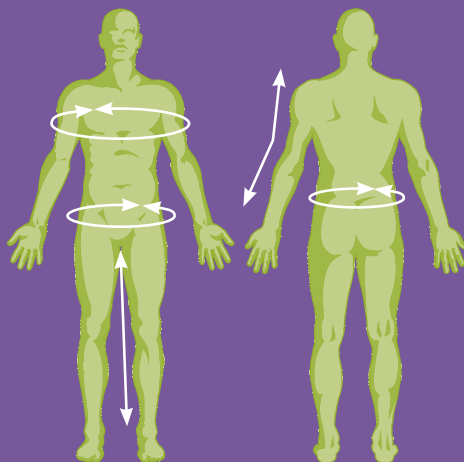
All Parweld's leather wear is tested and certified to BS EN ISO 11611:2007.

DEFINITIONS

BS EN ISO 11611:2007 Class 1

The product must:

- Offer protection against low level hazardous welding techniques and situations, causing lower levels of spatter and radiant heat.
- Provide adequate protection fit for the intended purpose.
- ISO 11611:2007 specifies minimum basic safety requirements and test methods for protective clothing including hoods, aprons, sleeves and gaiters that are designed to protect the wearer's body including head (hoods) and feet (gaiters) and that are to be worn during welding and allied processes with comparable risks.
- For the protection of the wearer's head and feet, ISO 11611:2007 is only applicable to hoods and gaiters.
- ISO 11611:2007 does not cover requirements for hand protection.



HOW TO MEASURE

BS EN 13402

Sleeve

- With your arms in a slightly bent position, measure from the centre of the back of your neck, along the length of your arm to the wrist.

Chest

- Measure around your chest holding the measuring tape under your armpits.

Waist

- Measure around your waist at the narrowest part.

Hip

- Measure around your hips at the widest part.

Inside Leg

- From a standing position, measure from your groin to your ankle.

	Chest	Waist
M	40" – 42" 100cm – 108cm	32" – 34" 80" – 88"
L	44" – 46" 112cm – 116cm	36" – 38" 92cm – 96cm
XL	48" – 50" 120cm – 124cm	40" – 42" 100cm – 108cm
XXL	52" 128cm+	44" – 50" 112cm – 116cm

PANTHER APRON C/W BUCKLE AND TIES

SPLIT COW HIDE

Stock Code P3725

Size 24" x 36" / 65cm x 90cm



FEATURES

- Offers Protection From Sparks and Heat Generated from Welding and Industrial Applications
- Kevlar® Stitched
- Strong Cotton Webbing
- 1.2mm Thick Cow Hide

STANDARDS

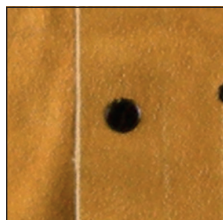
- BS EN ISO 11611:2007
- Class 1

PANTHER LEATHER WELDING JACKET

SPLIT COW HIDE

Stock Code P3788

Sizes M, L, XL and XXL



FEATURES

- Worn Over Garments To Protect Body and Arms from Sparks and Spatter
- Stand Up Collar
- Adjustable Wrists
- Inside Pocket
- Side Take Up Straps
- Kevlar® Stitched
- 1.2mm Thick Cow Hide

STANDARDS

- BS EN ISO 11611:2007
- Class 1



PANTHER LEATHER SPAT

SPLIT COW HIDE

Stock Code P3745

FEATURES

- Offers Protection for Shoes and Trousers from Sparks and Heat Generated from Welding and Industrial Applications
- 1.2mm Thick Cow Hide

STANDARDS

- BS EN ISO 11611:2007
- Class 1

PANTHER LEATHER SLEEVE

SPLIT COW HIDE

Stock Code P3765

Size 18"/45cm

FEATURES

- Offers Protection for Clothes and Arms from Sparks and Heat Generated from Welding and Industrial Applications
- Kevlar® Stitched
- Superior Quality Split Leather
- Elasticised At Both Ends
- 1.2mm Thick Cow Hide

STANDARDS

- BS EN ISO 11611:2007
- Class 1



RED APRON C/W BUCKLE AND TIES

LEATHER

Stock Code P3720

Size 24" x 36"/65cm x 90cm

FEATURES

- Heavy Duty Leather Apron with Reinforced Ties
- Offers Protection from Sparks and Heat Generated from Welding and Industrial Applications

STANDARDS

- BS EN ISO 11611:2007
- Class 1



RED WELDING JACKET

LEATHER

Stock Code P3780

Sizes M, L, XL and XXL

FEATURES

- Worn Over Garments to Protect Body and Arms from Sparks and Spatter
- Velcro and Stud Fastening
- Protective Flap for Fasteners

STANDARDS

- BS EN ISO 11611:2007
- Class 1



RED SLEEVE – 18"/45CM

LEATHER

Stock Code P3760

Size 18"/45cm

FEATURES

- Offers Protection for Clothes and Arms from Sparks and Heat Generated from Welding and Industrial Applications
- Elasticised Cuff

STANDARDS

- BS EN ISO 11611:2007
- Class 1

HAZARD PROTECTION

Parweld's range of welding blankets and curtains protect the user from accidents caused by welding sparks.

All Parweld welding blankets conform to BS EN 1869:1997

DEFINITIONS

BS EN ISO 1869:1997

The product must:

Protect workers whilst having the added benefit of shielding flammable materials, machinery, vehicles and plant and equipment from molten metal globules, spatter, etc.

Parweld welding blankets are reusable dependent upon the application.

Parweld's welding curtains can be used to isolate an area offering protection to workers working outside of the welding area from welding sparks, UV/IR light welding spatter by creating a moveable welding bay.

Parweld's safety apparel offers the users protection against the hazards in the workplace.



GREEN PVC WELDING CURTAIN

UV STABILISED / PVC

Stock Code

P3646G Size 4' x 6' / 1.2m x 1.8m

P3666G Size 6' x 6' / 1.8m x 1.8m

P3886G Size 8' x 6' / 2.4m x 1.8m

P3610 Curtain Rings

FEATURES

- Low visibility dark green PVC welding curtain for MIG and TIG welding
- Supplied with eyelets on 4 sides

STANDARDS

- BS EN ISO 25980:2014

ORANGE PVC WELDING CURTAIN

UV STABILIZED / PVC

Stock Code

P3646O Size 4' x 6' / 1.2m x 1.8m

P3666O Size 6' x 6' / 1.8m x 1.8m

P3886O Size 8' x 6' / 2.4m x 1.8m

P3610 Curtain Rings

FEATURES

- Low visibility orange PVC welding curtain for MIG and TIG Welding
- Supplied with eyelets on 4 sides

STANDARDS

- BS EN ISO 25980:2014

GREEN CANVAS WELDING CURTAIN

CANVAS

Stock Code

P3646CG Size 4' x 6' / 1.2m x 1.8m

P3666CG Size 6' x 6' / 1.8m x 1.8m

P3886CG Size 8' x 6' / 2.4m x 1.8m

P3610 Curtain Rings

FEATURES

- Low visibility dark green Canvas welding curtain for MIG and TIG Welding
- Supplied with eyelets on 4 sides

STANDARDS

- BS EN ISO 25980:2014



STEEL FRAME

Stock Code

P3666FR Size 6' x 6' / 1.8m x 1.8m

P3886FR Size 8' x 6' / 2.4m x 1.8m

FR-EXT Steel Frame Extension
2ft/0.6m

FEATURES

- Modular construction, can be extended from 6ft/1.8m to 8ft/2.4m
- Supplied without curtain
- Free Standing



WELDING BLANKET / ROLL 600°C

WOVEN GLASS FIBRE WITH
THERMAL TREATMENT

Stock Code

P3630 50m x 1m

P3621 2000mm x 1000mm

P3622 2000mm x 2000mm

P3623 3000mm x 2000mm

FEATURES

- Provides Protection from Sparks and Weld Spatter
- Heat Resistant Up To 600°C
- 430G/Sq M

STANDARDS

- BS EN 1869:1997



WELDING BLANKET / ROLL 1000°C

WOVEN GLASS FIBRE WITH
THERMAL TREATMENT

Stock Code

P3631 Size 50m x 1m

P3624 2000mm x 1000mm

P3625 2000mm x 2000mm

FEATURES

- Provides Protection from Sparks and Weld Spatter
- Heat Resistant Up To 1000°C
- 880G/Sq M

STANDARDS

- BS EN 1869:1997

FLAME PROTECTION

Parweld's range of Flame Retardant apparel protects the user in situations where they are likely to be exposed to heat / or flame.

All Parweld Flame Retardant (FR) apparel is tested and certified to EN 531 and EN 470.

DEFINITION

BS EN 11612:2008

The product must:

- Offer protection against brief contact with heat and flame.
The heat can be convective, radiant, molten material, or a combination thereof:

The garment is classified for the following parameters:

- (A) Limited Flame Spread
- (B) Convective Heat, a scale of 1-5 where 5 is the highest
- (C) Radiant Heat, Scale 1-4, where 4 is the highest



BS EN 11611:2007

The product must:

- Offer protection against small splashes of molten metal, and brief contact with flame. The garments certified to this standard are suitable for use in welding and allied processes.
- The garments are tested to withstand at least 15 drops of molten metal, and have a maximum temperature rise of 40°C on the back of the fabric. The test includes limited flame spread.



FLAME RETARDANT HOOD

**335G 100% COTTON FABRIC WITH
FLAME RETARDANT TREATMENT**

Stock Code P3940

FEATURES

- Front Fastening
- Adjustable
- Lined Hood
- Navy Blue

STANDARDS

- BS EN 11612:2008
- BS EN 1161:2007
- BS EN ISO 14116:2008



A1 B1 C1

EVERYDAY FLAME RETARDANT HOOD

**335g 100% COTTON FABRIC WITH
FLAME RETARDANT TREATMENT**

Stock Code P3942

FEATURES

- Front Fastening
- Adjustable
- Navy Blue

STANDARDS

- BS EN 11612:2008
- BS EN 1161:2007
- BS EN ISO 14116:2008



A1 B1 C1



FLAME RETARDANT HOOD LONG

**335g 100% COTTON FABRIC WITH
FLAME RETARDANT TREATMENT**

Stock Code P3950

FEATURES

- Front Fastening
- Adjustable
- Lined Hood
- Longer Cape
- Navy Blue

STANDARDS

- BS EN 11612:2008
- BS EN 1161:2007
- BS EN ISO 14116:2008



A1 B1 C1

EYE PROTECTION

Parweld's range of protective eye wear offers the user a lightweight range whilst ensuring maximum comfort and safety.

Features include a moulded nose bridge, fully seamless and soft grips.

All eye wear and visors are certified to BS EN 166 tested.

DEFINITION

BS EN 166:2002

The product must:

- Conform to the correct mechanical strength
- The correct use and optical performance
- All Parweld eye wear is impact rated F and Optical Class 1

Eye Protector	Increased Robustness Impact Velocity 12m/s	Low Energy Impact Velocity 45 m/s	Medium Energy Impact Velocity 120 m/s	High Energy Impact Velocity 190 m/s
Spectacles	✓	✓	X	X
Goggles	✓	✓	✓	X
Face Shield	✓	✓	✓	✓
Classification (symbol of lens)	S	F	B	A
Classification (symbol on frame)		F	B	A

Eye Protector	Liquid Droplets and Splashes	Large Dust Particles	Gas and Fine Dust Particles	Molten Metal and Hot Solids	Optical Performance
Spectacles	X	X	X	X	1
Goggles	✓	✓	✓	✓	1
Face Shield	✓	X	X	✓	1
Classification (symbol of lens)				9	
Classification (symbol on frame)	3	4	5	9	

WRAP AROUND SAFETY SPECTACLE

BLACK NYLON FRAME POLYCARBONATE LENS

Stock Code

P3400 – Clear

P3400A – Amber

P3400S – Smoked



FEATURES

- Optical Class 1
- Low Profile
- Wrap Around Sports Design
- Moulded Nose Bridge
- Comfortable Flexible Frame
- 99.9% UV Protection

STANDARDS

- BS EN166:2002 1F

SPORTS STYLE SPECTACLE

NYLON FRAME WITH METALLIC PAINT /
CLEAR POLYCARBONATE LENS

Stock Code P3442/RS – Red, P3442 – Blue



FEATURES

- Optical Class 1
- Low Profile
- Panoramic Vision
- Cushioned Side Arms
- Moulded Nose Bridge
- Lightweight
- 99.9% UV Protection
- Supplied With Neck Cord

STANDARDS

- BS EN166:2002 1F



CLEAR VISITOR SPECTACLES

CLEAR POLYCARBONATE FRAME AND LENS

Stock Code P3430

FEATURES

- Optical Class 1 • Vented Side Shields • Lightweight Polycarbonate Lens • Can be Worn Over Prescription Spectacles

STANDARDS

- Conforms to BS EN 166:2002 1FT



PANORAMIC SAFETY GOGGLE DIRECT

PVC

Stock Code P3300D

FEATURES

- Designed for Impact Protection
- Clear PVC Frame With Direct Ventilation • Can be Worn Over Prescription Spectacles
- Adjustable Strap

STANDARDS

- Conforms to BS EN 166:2002 1-49BT



CLEAR SAFETY SPECTACLE

BLACK NYLON FRAME CLEAR POLYCARBONATE LENS

Stock Code P3420

FEATURES

- Optical Class 1 • Black Nylon Frame with Internal Brow Guard
- Panoramic Vision • Adjustable Arms • Non-Slip Nose Piece

STANDARDS

- Conforms to BS EN 166:2002 1FT



CLEAR SKI GOGGLE

POLYCARBONATE LENS PVC SEAL

Stock Code P3305

FEATURES

- Optical Class 1 • Soft PVC Seal For Comfort • Impact Rating B • Indirect Ventilation
- Lightweight • Can be Worn Over Prescription Spectacles
- Adjustable Strap

STANDARDS

- Conforms to BS EN 166:2002 1B



NYLON BLACK FRAME SPECTACLE

NYLON FRAME POLYCARBONATE LENS

Stock Code P3410, P3410A, P3410S

FEATURES

- Optical Class 1 • Low Profile, Panoramic Vision • Wrap Around Sports Design
- Cushioned Side Arms
- Anti-Scratch • Adjustable Side Arms • Supplied with Neck Cord

STANDARDS

- Conforms to BS EN 166:2002 1FT



41/4" X 2" (108mm X 50mm) FLIP UP WELDING GOGGLE

Stock Code P3390

Size 41/4" x 2"
(108mm x 50mm)

FEATURES

- One Piece Goggle with Soft Moulded Body • Flip Front Design • Indirect Vent PVC Housing • Clear and Shade 5 Lens

STANDARDS

- BS EN 166:2002, BS EN 175:1997 and BS EN 169:2002



SKI TYPE WELDING GOGGLE

PVC

Stock Code P3310

FEATURES

- One Piece Goggle With Soft Moulded Body • Spatter Resistant Acetate Lens • Wide Vision • Shade 5 Lens

STANDARDS

- BS EN 166:2002, and BS EN 169:2002



ROUND LENS FLIP UP WELDING GOGGLE

PVC

Stock Code P3330

FEATURES

- One Piece Goggle with Soft Moulded Body • Flip Front Design • Indirect Vent PVC Housing • 50mm Polycarbonate Lens • Clear and Shade 5 Lens

STANDARDS

- BS EN 166:2002, BS EN 175:1997 and BS EN 169:2002



PANORAMIC SAFETY GOGGLE INDIRECT

PVC

Stock Code P3300

FEATURES

- Designed for Impact Protection • Clear PVC Frame with Indirect Ventilation • Can be Worn Over Prescription Spectacles • Adjustable Strap

STANDARDS

- BS EN 166-1-49BT



SHADE 3 VISOR

Stock Code P3260-3

Size 8" x 12"

STANDARDS

- BS EN 166:2002 IB, and BS EN 169:2002



SHADE 5 VISOR

Stock Code P3260-5

Size 8" x 12"

STANDARDS

- BS EN 166:2002 IB, and BS EN 169:2002



CLEAR VISOR

Stock Code P3261

Size 8" x 15½"

STANDARDS

- BS EN 166:2002 1B



SHADE 5 VISOR

Stock Code P3261-5

Size 8" x 15½"

STANDARDS

- BS EN 166:2002 1B, and
BS EN 169:2002



VISOR CARRIER WITH POSTS

Stock Code P3263

For use with a Hard Hat



BROWGUARD C/W HEADGEAR

Stock Code P3266

RESPIRATORY PROTECTION

Parweld's range of respirators protects the user from environmental risk against solids, as well as water and oil based aerosols.

All Parweld respirators are certified to BS EN 149:2001 and CE certified.

Parweld moulded FFP masks have been designed with a preformed nose bridge and reinforcement strip providing a comfortable fit which eliminates the need for constant adjustment.

All masks are fitted with a one way exhaust valve to minimise breathing resistance.

DEFINITION

BS EN 149:2001

There are three classes of protection detailed in EN149:2001:

- **FFP1, FFP2 & FFP3 and filtering face pieces** are classified according to filter efficiency.

FFP1	Low Efficiency	Protection Factor 4
FFP2	Medium Efficiency	Protection Factor 10
FFP3	High Efficiency	Protection Factor 20



FFP1 MOULDED DUST RESPIRATOR WITH EXHALATION VALVE

Stock Code P3110V

FEATURES

- Respiratory Protection Against Non Toxic Dusts and Powders
- Includes an Exhalation Valve to Allow Exhaled Air to be Vented From the Mask Without Compromising Protection
- Protection Factor 4
- Adjustable Head Straps and Nose Piece

STANDARDS

- BS EN 149:2001

FFP2 MOULDED DUST/MIST RESPIRATOR WITH EXHALATION VALVE

Stock Code P3121V

FEATURES

- Respiratory Protection Against Low To Average Toxic Dusts and Powders
- Includes an Exhalation Valve to Allow Exhaled Air to be Vented From the Mask Without Compromising Protection
- Protection Factor 10
- Adjustable Head Straps and Nose Piece

STANDARDS

- BS EN 149:2001



FFP2 MOULDED ACTIVE CARBON RESPIRATOR C/W EXHALATION VALVE

Stock Code P3122V

FEATURES

- Respiratory Protection Against Low to Average Toxicity Dust and Powders
- Respiratory Protection For Fine Particles With Active Carbon Layer Offering Relief From Ozone and Low Levels Of Gases and Vapours Below OEL Limits
- Includes an Exhalation Valve to Allow Exhaled Air to be Vented From the Mask Without Compromising Protection
- Protection Factor 10
- Adjustable Head Straps and Nose Piece

STANDARDS

- BS EN 149:2001

FFP3 MOULDED DUST/MIST/FUME RESPIRATOR WITH EXHALATION VALVE

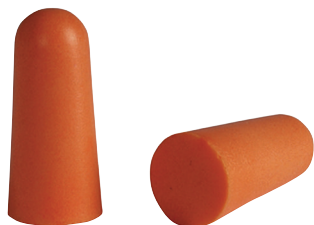
Stock Code P3130V

FEATURES

- Respiratory Protection Against Highly Toxic Dusts and Powders
- Respiratory Protection for Fine Particles with Active Carbon Layer Offering Relief from Ozone and Low Level of Gases and Vapour Below OEL Limits
- Includes an Exhalation Valve to Allow Exhaled Air to be Vented From the Mask Without Compromising Protection
- Protection Factor 20
- Adjustable Head Straps and Nose Piece

STANDARDS

- BS EN 149:2001



FOAM EAR PLUG

Stock Code P3500

FEATURES

- Cylindrical Soft Foam, Compress To Fit, Disposable Ear Plug
- Designed To Provide The Ultimate In Comfort, SNR = 37db

STANDARDS

- BS EN 352-2:2002



EAR DEFENDER

Stock Code P3590

FEATURES

- Comfortable Noise Reducing Ear Defender
- General Purpose Adjustable Headband
- SNR = 24db

STANDARDS

- BS EN 352-1:2002

NEW XR936A AIR RESPIRATORY SYSTEM

Stock Code XR936A



FEATURES

- Portable and Lightweight
- Protects Against Dust Particles, Solid and Liquid Aerosols and Smoke
- Constant Filtered Air Flow
- Lightweight Li-ion Removable Battery
- DIN5-13
- Audible, Visible and Vibration Warning Alarms for Low Power, Low Air-flow and Blocked Filter
- Variable Sensitivity
- Grinding Mode
- Variable Lightening Delay Settings
- Full Face Coverage
- Automatic Power On/Off
- UV/IR Protection up to shade DIN 16
- 24 Months Warranty (6 Months on Battery)
- Conforms to BE EN 12941 TH2P R SL
- BS EN 379:2003+A1:2009
- BS EN 175:1997
- BS EN 12941:1998+A2:2008

The Parweld XR936A combines a Light Reactive Parweld Welding Helmet with a clean air respiratory unit to provide the user with added protection against welding fume, dust particles and aerosols.

TECHNICAL DATA

Air Flow Range	150 – 220 l/min
Weight of Power Unit including Filter and Battery	920g
Protection and Noise Level	TH2 P, NPF 20, 65db
Regulated Airflow	8 Speed Adjustable
Minimum Welding Amperage Required	5A
Battery Life Expectancy	350 charging cycles
One Charging Cycle	3 to 4 hours
Operating Time of Battery After One Charging (dependant on filter condition and air flow speed)	6 to 8 hours
Belt Size	80 to 100cm
Recommended Working Temperature	0° to 40°C
Recommended Working Humidity	20 to 80% RH
Alarms	Audible, Visible and Vibration
Filter Type	PRSL

SPARES INFORMATION

Stock Code	Description
XR936A	Air Respiratory System complete with Welding and Grinding Helmet
XR260	Face Seal
XR261	Headgear and Airduct Assembly
XR262	Hose and Cover Assembly
XR264	Belt
XR265	Charger
XR266	Battery
XR267	Filter
XR268	Pre-Filter
XR280	Helmet and Face Seal
XR263	Blower without Helmet

Clean Air Unit

The Parweld powered air purifying respirator (PAPR) provides a steady stream of clean air into the welding mask.

The air is fed into the helmet above the welder's head and exits below the chin.

The air stream combined with the positive pressure created within the helmet prevents contaminated air entering the breathing zone.

Portable and Lightweight

The main unit and battery pack are carried by the user on a support belt around the waist, which is connected to the welding helmet by a lightweight hose.

Adjustable Air Flow

The air flow rate can be adjusted from 150 to 220lpm by means of a push button panel with led indication. In the event of a flow rate falling below the minimum required level to give protection the blower unit will automatically increase the fan speed to compensate. If the minimum flow rate cannot be achieved then an alarm will sound so that the operator can leave the work area safely, if the first alarm is ignored the unit will then start to vibrate and increase the volume of the alarm.

The Li-ion battery pack is rechargeable and will operate from 6 to 8 hours continuously, dependant on operational mode.

Filters and Pre-Filters

The XR936A uses a 2 stage filter process, the main P3 filter gives the required essential isolation against welding particles, smoke and dust providing the user with a protection factor of 20.

The standard filter can be complemented with a pre filter which removes large dust particles and so extends the life of the main filter.

Conforms to International Standards

The XR936A Air Flow System is independently certified to BS EN 12941:TH2P R SL.

The XR936H Light Reactive Welding and Grinding Helmet is independently certified to BS EN 379:2003+A1:2009, BS EN 175:1997.

See page before

XR936H LARGE VIEW LIGHT REACTIVE WELDING AND GRINDING HELMET

Stock Code XR936H

PPE



FEATURES

- Slim and Lightweight
- Automatic Light Adjustment From Light to Dark in 1/30,000th of a Second
- Shade Control from DIN5-13
- Variable Sensitivity
- Grinding Mode
- Variable Delay
- Viewing Area 100mm x 52mm / 3.94" x 2.05"

- Full Face Coverage
- Suitable for TIG Welding
- Automatic Power On/Off
- Battery Life Expectancy 6 Years
- UV/IR Protection up to shade DIN 16
- Confirms to CE and BS EN 379:2003+AI:2009, BS EN 175:1997, EN 166:2002
- 24 Months Warranty

Arc welding generates visible light, infrared and ultra violet radiation, which can damage eyes and skin. **The Parweld XR936H Large View Light Reactive Welding Helmet** offers the latest innovative protection for the welder.

TECHNICAL DATA

Viewing Area	100 x 52mm / 3.94" x 2.05"
Cartridge Size	110mm x 90mm / 4.33" x 3.54"
UV/IR Protection	Permanent Shade DIN16
Light State	DIN Shade 4
Dark State	DIN Shade 5 to 13 Variable
Power Supply	Solar cells with replaceable batteries
Power On/Off	Fully Automatic
Switching Time Light to Dark	1/30,000 seconds
Dark to Light	0.1-1.0 seconds (Internal variable)
Operating Temp	-10 C to +60 C (14 F to 140 F)
Storage Temp	-20°C to +70°C (-4°F to -158°F)
Helmet Material	High Impact Polyamide Nylon
Total Weight	535g
Minimum Amperage Required	5A

SPARES INFORMATION

Stock Code	Description
XR936H	Large View Light Reactive Welding and Grinding Helmet
XR936H/BL	Large View Light Reactive Helmet - Blue
XR936H/E	Large View Light Reactive Helmet - Eagle
XR936H/F	Large View Light Reactive Helmet - Flame
XR936H/R	Large View Light Reactive Helmet - Red
XR720	Front Cover Lens
XR360	Auto Darkening Filter Cartridge
XR730	Inside Cover Lens
XR770	Sweat Band
XR740	Adjustable Headband

Moulded Construction

The XR936H is both slim and lightweight in construction. Manufactured from a high impact polyamide nylon material which ensures the helmet provides high levels of comfort and durability. The metallic paint finish ensures maximum heat reflection.

Full Face Coverage

A curved design with a clear spatter shield over the optics provides maximum clarity. The helmet is fully adjustable to suit all head and body types. Features full neck coverage, locking headgear and automatic power on/off switch.

Fast Switching

The auto on, auto darkening, wide view lens switches from light to dark in 1/30,000th of a second and offers continuous eye protection against UV and IR radiation, even when the lens is in the light state mode.

The grinding switch is conveniently located on the outside of the helmet. The switch locks the filter in the light state (Shade 4) to enable the helmet to be used as a grinding visor.

Solar Powered

The helmet is powered by a solar cell with replaceable backup batteries.

Filters

The welding filter has 4 sensors that react independently as the welding arc is struck enabling the almost instantaneous darkening of the filter.

The switching sensitivity knob is located on the inside of the helmet and allows the helmet to be tuned to work in different ambient light levels.

All Parweld filters have a Shade 4 light state, ideal for welding preparation.

Conforms to European Standards

The XR936H Light Reactive Helmet is independently certified to BS EN 379 and BS EN 175, EN 166, BS EN 379:2003+A1:2009, BS EN 175:1997, BS EN 166:2002.

XR935H EVERYDAY LIGHT REACTIVE WELDING AND GRINDING HELMET

Stock Code XR935H



FEATURES

- Slim and Lightweight
- Automatic Light Adjustment From Light to Dark in 1/30,000th of a Second
- Shade Control from DIN9-13
- Variable Sensitivity
- Grinding Mode
- Variable Delay
- Viewing Area 100mm x 41mm / 3.94" x 1.62"
- Full Face Coverage
- Automatic Power On/Off
- Built in Battery
- Adjustable Headgear
- Ergonomically Balanced to Increase Comfort
- UV/IR Protection up to shade DIN 16
- Confirms to CE and BS EN 379:2003+A1:2009, BS EN 175:1997, BS EN 166:2002
- 12 Months Warranty

Arc welding generates visible light, infrared and ultra violet radiation, which can damage eyes and skin. **The Parweld XR935H** Light Reactive Welding Helmet offers the latest innovative protection for the welder.

TECHNICAL DATA

Viewing Area	100mm x 41mm / 3.94" x 1.62"
Cartridge Size	110mm x 90mm / 4.33" x 3.54"
UV/IR Protection	Permanent Shade DIN16
Light State	DIN Shade 4
Dark State	DIN Shade 9 to 13 Variable
Power Supply	Solar cells with built in battery
Power On/Off	Fully Automatic
Switching Time Light to Dark	1/30,000 seconds
Dark to Light	0.1-1.0 seconds (Internal variable)
Operating Temp	-10 C to +60 C (14 F to 140 F)
Storage Temp	-20°C to +70°C (-4°F to -158°F)
Helmet Material	High Impact Polyamide Nylon
Total Weight	466g
Minimum Amperage Required	10A

SPARES INFORMATION

Stock Code	Description
XR935H	Everyday Light Reactive Welding and Grinding Helmet
XR320	Front Cover Lens
XR550	Auto Darkening Filter Cartridge
XR330	Inside Cover Lens
XR370	Sweat Band
XR340	Adjustable Headband

Moulded Construction

The XR935H is both slim and lightweight in construction. Manufactured from a high impact polyamide nylon material which ensures the helmet provides high levels of comfort and durability.

Full Face Coverage

A curved design with a clear spatter shield over the optics provides maximum clarity. The helmet is fully adjustable to suit all head and body types. Features full neck coverage, locking headgear and automatic power on/off switch.

Fast Switching

The auto on, auto darkening, wide view lens switches from light to dark in 1/30,000th of a second and offers continuous eye protection against UV and IR radiation, even when the lens is in the light state mode.

The grinding switch is conveniently located on the outside of the helmet. The switch locks the filter in the light state (Shade 4) to enable the helmet to be used as a grinding visor.

Solar Powered

The helmet is powered by a solar cell, there is no need for external batteries or cables. Internal battery life expectancy is 6 years.

Filters

The welding filter has 2 sensors that react independently as the welding arc is struck enabling the almost instantaneous darkening of the filter.

The switching sensitivity knob is located on the inside of the helmet and allows the helmet to be tuned to work in different ambient light levels.

All Parweld filters have a Shade 4 light state, ideal for welding preparation.

Conforms to European Standards

The XR935H Light Reactive Helmet is independently certified to BS EN 379 and BS EN 175, EN 166, BS EN 379:2003+A1:2009, BS EN 175:1997, BS EN 166:2002.

STANDARD GLASS FILTER LENSES

Designed for use with welding helmets to protect the users eyes.
Should always be used in conjunction with a clear cover lens.



Size **4 1/4" x 2" / 108mm x 50mm**

STANDARD BS EN 169:2002, BS EN 166:2002

Stock Code	Shade
LS0850	Shade 8
LS0950	Shade 9
LS1050	Shade 10
LS1150	Shade 11
LS1250	Shade 12
LS1350	Shade 13



Size **4 1/4" x 3 1/4" / 108mm x 82mm**

STANDARD BS EN 169:2002, BS EN 166:2002

Stock Code	Shade
LS0882	Shade 8
LS0982	Shade 9
LS1082	Shade 10
LS1182	Shade 11
LS1282	Shade 12
LS1382	Shade 13



Size **5 1/4" x 4 1/2" / 133mm x 114mm**

STANDARD BS EN 169:2002, BS EN 166:2002

Stock Code	Shade
LS0813	Shade 8
LS0913	Shade 9
LS1013	Shade 10
LS1113	Shade 11
LS1213	Shade 12
LS1313	Shade 13



Size **110mm x 55mm**

STANDARD BS EN 169:2002, BS EN 166:2002

Stock Code	Shade
LS0855	Shade 8
LS0955	Shade 9
LS1055	Shade 10
LS1155	Shade 11
LS1255	Shade 12
LS1355	Shade 13



Size 110mm x 60mm

STANDARD BS EN 169:2002, BS EN 166:2002

Stock Code	Shade
LS0860	Shade 8
LS0960	Shade 9
LS1060	Shade 10
LS1160	Shade 11
LS1260	Shade 12
LS1360	Shade 13



Size 110mm x 90mm

STANDARD BS EN 169:2002, BS EN 166:2002

Stock Code	Shade
LS0890	Shade 8
LS0990	Shade 9
LS1090	Shade 10
LS1190	Shade 11
LS1290	Shade 12
LS1390	Shade 13

Clear CR39 Cover Lens

Designed for use with welding helmets to protect the filter lens from spatter.

STANDARD BS EN 166:2002 1S

Stock Code	Size
LCR3950	4¼ x 2" / 108 x 50mm
LCR3982	4¼ x 3¼" / 108 x 82mm
LCR3933	5¼ x 4½" / 133 x 114mm

Clear Polycarbonate Cover Lens

Designed for use with welding helmets to protect the filter lens from spatter.

STANDARD BS EN 166:2002

Stock Code	Size
LP0050	4¼ x 2" / 108 x 50mm
LP0060	110 x 60mm
LP0082	4¼ x 3¼" / 108 x 82mm
LP0082	5½ x 4¼" / 133 x 114mm

Diopeter Lens

4¼" and 2"/108mm and 50mm.

STANDARD BS EN 166:2002 1F

Stock Code	Magnification
LD1050	1.0
LD1550	1.5
LD2050	2.0
LD2550	2.5
LD3050	3.0

Clear Glass Cover Lens

Designed for use with welding helmets to protect the filter lens from spatter.

STANDARD BS EN 166:2002 1

Stock Code	Size
LC0050	4¼ x 2" / 108 x 50mm
LC0082	4¼ x 3¼" / 108 x 82mm
LC1055	110 x 55mm
LC0133	5½ x 4¼" / 133 x 114mm
LC1060	110 x 60mm
LC1090	110 x 90mm