



INSTRUCTIONS FOR:

ELECTRIC OIL FILLED RADIATORS

MODEL NO'S: **RD1500.V6 & RD2500.V6**

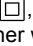
Thank you for purchasing a Sealey product. Manufactured to a high standard, this product will, if used according to these instructions, and properly maintained, give you years of trouble free performance.

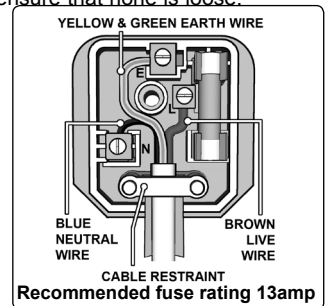


IMPORTANT: PLEASE READ THESE INSTRUCTIONS CAREFULLY. NOTE THE SAFE OPERATIONAL REQUIREMENTS, WARNINGS & CAUTIONS. USE THE PRODUCT CORRECTLY AND WITH CARE FOR THE PURPOSE FOR WHICH IT IS INTENDED. FAILURE TO DO SO MAY CAUSE DAMAGE AND/OR PERSONAL INJURY AND WILL INVALIDATE THE WARRANTY. KEEP THESE INSTRUCTIONS SAFE FOR FUTURE USE.

1. SAFETY

1.1. ELECTRICAL SAFETY

- WARNING!** It is the responsibility of the owner and the operator to read, understand and comply with the following:
You must check all electrical products, before use, to ensure that they are safe. You must inspect power cables, plugs, sockets and any other connectors for wear or damage. You must ensure that the risk of electric shock is minimised by the installation of appropriate safety devices. A Residual Current Circuit Breaker (RCCB) should be incorporated in the main distribution board. We also recommend that a Residual Current Device (RCD) is used. It is particularly important to use an RCD with portable products that are plugged into a supply which is not protected by an RCCB. If in any doubt consult a qualified electrician. You may obtain a Residual Current Device by contacting your Sealey dealer.
You must also read and understand the following instructions concerning electrical safety.
- 1.1.1. The **Electricity at Work Act 1989** requires all portable electrical appliances, if used on business premises, to be tested by a qualified electrician, using a Portable Appliance Tester (PAT), at least once a year.
- 1.1.2. The **Health & Safety at Work Act 1974** makes owners of electrical appliances responsible for the safe condition of those appliances and the safety of the appliance operators. **If in any doubt about electrical safety, contact a qualified electrician.**
- 1.1.3. Ensure that the insulation on all cables and on the appliance is safe before connecting it to the power supply. See 1.1.1. and 1.1.2. and use a Portable Appliance Tester.
- 1.1.4. Ensure that cables are always protected against short circuit and overload.
- 1.1.5. Regularly inspect power supply cables and plugs for wear or damage and check all connections to ensure that none is loose.
- 1.1.6. **Important:** Ensure that the voltage marked on the appliance matches the power supply to be used and that the plug is fitted with the correct fuse - see fuse rating at right.
- 1.1.7. **DO NOT** pull or carry the appliance by the power cable.
- 1.1.8. **DO NOT** pull the plug from the socket by the cable.
- 1.1.9. **DO NOT** use worn or damaged cables, plugs or connectors. Immediately have any faulty item repaired or replaced by a qualified electrician. When an ASTA/BS approved UK 3 pin plug is damaged, cut the cable just above the plug and **dispose of the plug safely**. Fit a new plug according to the following instructions (UK only).
 - a) **Connect the GREEN/YELLOW earth wire to the earth terminal 'E'.**
 - b) **Connect the BROWN live wire to the live terminal 'L'.**
 - c) **Connect the BLUE neutral wire to the neutral terminal 'N'.**
 - d) **After wiring, check that there are no bare wires, that all wires have been correctly connected, that the cable outer insulation extends beyond the cable restraint and that the restraint is tight.**Double insulated products, which are always marked with this symbol , are fitted with live (brown) and neutral (blue) wires only. To rewire, connect the wires as indicated above - **DO NOT** connect either wire to the earth terminal.
- 1.1.10. Products which require more than 13 amps are supplied without a plug. In this case you must contact a qualified electrician to ensure that a suitably rated supply is available. We recommend that you discuss the installation of an industrial round pin plug and socket with your electrician.
- 1.1.11. If an extension reel is used it should be fully unwound before connection. A reel with an RCD fitted is preferred since any appliance plugged into it will be protected. The cable core section is important and should be at least 1.5mm², but to be absolutely sure that the capacity of the reel is suitable for this product and for others which may be used in the other output sockets, we recommend the use of 2.5mm² section cable.
- 1.1.12. **DO NOT** move the heater whilst it is **ON**, always disconnect from the supply and allow to cool first.



1.2. GENERAL SAFETY

- WARNING!** Disconnect the heater from the mains power, before servicing or performing any maintenance, which must only be carried out by an authorised service agent. Report any oil leakage immediately to an authorised service agent.
- ✓ Replace or repair damaged parts. *Use recommended parts only. Unauthorised parts may be dangerous and will invalidate the warranty.*
- ✓ Ensure that the heater is used in an area larger than 4m³. Allow a few centimetres of clearance from any surface, and ensure there is good overhead clearance for heat circulation.
- ✓ Only use the heater in an upright position.
- WARNING!** do not tamper with the wiring, heating element or oil. The system is a sealed unit. The breaking of any seal may be dangerous, will damage the heater and will invalidate the warranty.
- x **DO NOT** use the heater for anything other than its intended purpose. It is designed for providing heat in enclosed areas, no smaller than 4m³, such as offices, homes, workshops etc. It is not suitable for drying clothes or laundry.
- x **DO NOT** place the heater close to a bath, wash basin, shower, swimming pool or any other water-filled area or wet surface. **DO NOT** get the heater wet or use in areas of high condensation.
- x **DO NOT** place the heater up against any surface such as a wall, door, furniture etc.
- x **DO NOT** place the heater immediately below any electrical outlet.
- x **DO NOT** allow the power lead to touch the radiator surface.
- x **DO NOT** cover the radiator or use it to dry laundry.
- x **DO NOT** switch the heater on whilst the electrical lead is wrapped on the storage bracket.
- x **DO NOT** store the electrical lead until the radiator is cold.
- x **DO NOT** attempt to repair a damaged heater, contact an authorised service agent.
- x **DO NOT** stand on the heater.
- x **DO NOT** touch the heating elements when the heater is on as it becomes very hot.
- ✓ Operators must read this manual or receive adequate training before using the heater.



- ✓ Children should be supervised at all times when the heater is in use.
- ✓ Ensure that the heater is correctly turned off when not in use and store in a safe, dry area, out of reach of children.
- ☐ **WARNING! The warnings, cautions and instructions in this manual cannot cover all possible conditions and situations that may occur. It must be understood by the operator that common sense and caution are factors which cannot be built into this product, but must be applied by the operator.**

NOTE: This appliance is not intended for use by persons (including children) with reduced physical, sensory or mental capabilities or lack of experience and knowledge, unless they have been given supervision or instruction concerning the use of the appliance by a person responsible for their safety. Children should be supervised to ensure that they do not play with the appliance.

2. INTRODUCTION

Oil-filled radiators suitable for office, home, showroom and workshop use. Manufactured to rigorous safety standards and fitted with a 13A BS approved plug. Features full thermostatic heat control that cuts power to the heater elements when pre-set temperature is attained and tilt safety switch. Elements designed to maximize area of the heated surface in order to transfer more heat to the atmosphere. Fitted with castors for added mobility.

3. SPECIFICATION

MODEL	INPUT/OUTPUT	NO OF ELEMENTS
RD1500.V6	230V 13A 1500W	7
RD2500.V6	230V 13A 2500W	11

4. CONTENTS

Item	Description (RD1500.V6)	Qty
1	7 Element Oil Filled Radiator	1
2	Castor Wheel Plate	2
3	"U" Bolt	2
4	Nut	2

Item	Description (RD2500.V6)	Qty
1	11 Element Oil Filled Radiator	1
2	Castor Wheel Plate	2
3	"U" Bolt	2
4	Nut	2

5. ASSEMBLY

Refer to fig.2 and invert the radiator after removal from packaging, oil should be heard flowing internally under gravity, this is expected and not a problem. Attach the castor wheels by passing the stud through the underside of the wheel plate and securing with the supplied nut. Mount the castor wheel plate between the first and second element of each end of the radiator. Tighten the wing nuts on the metal "U" bolts; return the radiator to the upright position; oil should be heard flowing internally under gravity and your heater is ready to use when the flowing ceases. Check the unit is the correct way up by observing carrier handle apertures are at the top and the cable tidy is at the bottom, also the thermostat "LOW" and "HIGH" instruction is further confirmation (fig.3).

SAFETY FEATURE:- *The tilt safety switch will isolate supply if accidentally tipped over or if assembled upside down.*

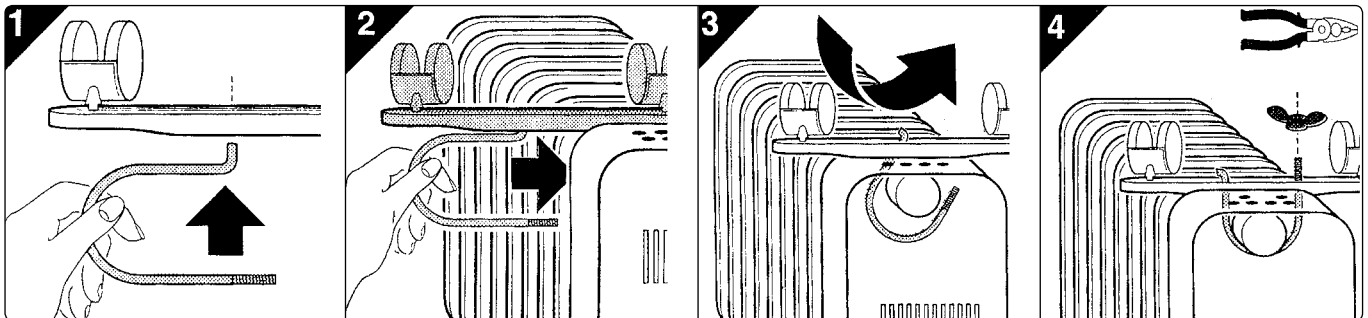
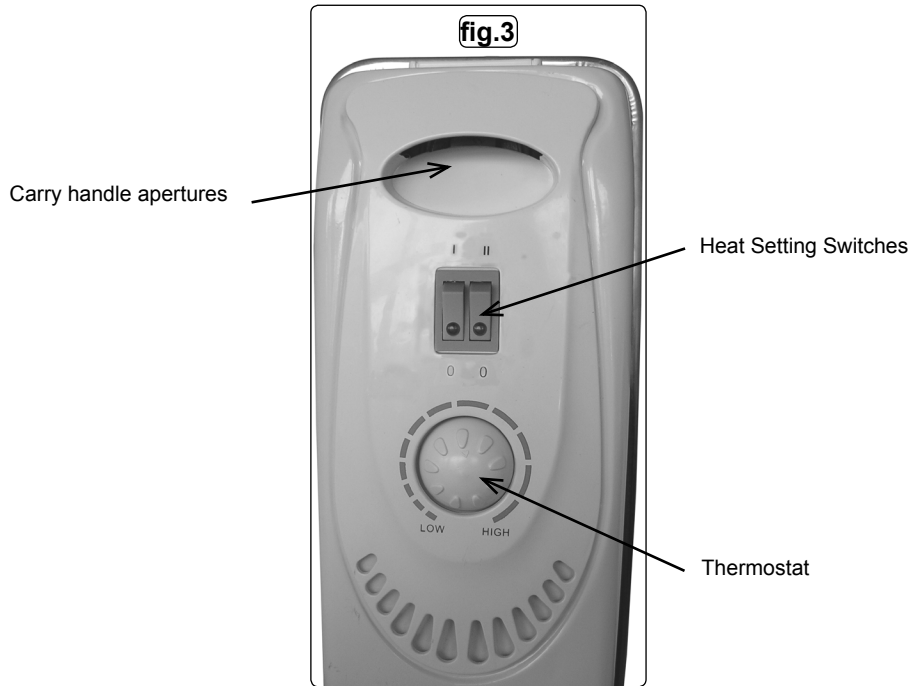


fig.2

6. OPERATION

- 6.1. Unwrap the mains lead and plug it into the power supply.
- 6.2. Turn the thermostat control to the highest setting.
- 6.3. Choose the required heat output by selecting the appropriate switch which will light up when pressed.
- 6.4. Low setting: Select switch with one black bar above it.
Medium setting: Select switch with two black bars above it. Set switch with one black bar to off.
High setting: Select both switches.
- 6.5. Once the required room temperature has been achieved turn the thermostat down until the light on the selected heat setting switch goes out. The heater will then keep the surrounding air at the set temperature by switching on and off at intervals. You may reset the thermostat at any time.
- 6.6. To switch the unit off, turn the heat selecting switches off and unplug from the mains. Allow the unit to cool before handling or storage.
- 6.7. **Safety cut-out.** The heater is fitted with a safety tilt switch and a thermostatic safety cut-out which will automatically turn the heater off should it be placed in circumstances that cause overheating or malfunction. Should this happen, switch the heater off and disconnect it from the mains. Allow the heater to cool before handling. **DO NOT** use the heater again until the cause has been identified and remedied. If necessary return the heater to your Sealey dealer for servicing.
- 6.8. When used for the first time set the heater to maximum power for a few minutes. Ventilate the room well to eliminate the newness smell, typical of this type of heater.



7. MAINTENANCE

- ☐ **WARNING!** Disconnect the heater from the mains power, before servicing or performing any maintenance, which must only be carried out by an authorised service agent with the exception of the following.
 - 7.1. Dust the radiator (when cold) with a dry cloth.
 - 7.2. Do not use a strong abrasive to clean the radiator.
 - 7.3. When storing the heater in the summer, use the original shipping box and store in a safe, dry location.
- Note:** Report any oil leakage immediately to an authorised service agent.



Environmental Protection

Recycle unwanted materials instead of disposing of them as waste. All tools, accessories and packaging should be sorted, taken to a recycling centre and disposed of in a manner which is compatible with the environment. When the product becomes completely unserviceable and requires disposal, drain off any fluids (if applicable) into approved containers and dispose of the product and the fluids according to local regulations.



WEEE Regulations

Dispose of this product at the end of its working life in compliance with the EU Directive on Waste Electrical and Electronic Equipment (WEEE). When the product is no longer required, it must be disposed of in an environmentally protective way. Contact your local solid waste authority for recycling information.

NOTE: It is our policy to continually improve products and as such we reserve the right to alter data, specifications and component parts without prior notice.

IMPORTANT: No liability is accepted for incorrect use of this product.

WARRANTY: Guarantee is 12 months from purchase date, proof of which will be required for any claim.

INFORMATION: For a copy of our latest catalogue and promotions call us on 01284 757525 and leave your full name and address, including postcode.



Sole UK Distributor, Sealey Group,
Kempson Way, Suffolk Business Park,
Bury St. Edmunds, Suffolk,
IP32 7AR



01284 757500



01284 703534



www.sealey.co.uk



sales@sealey.co.uk