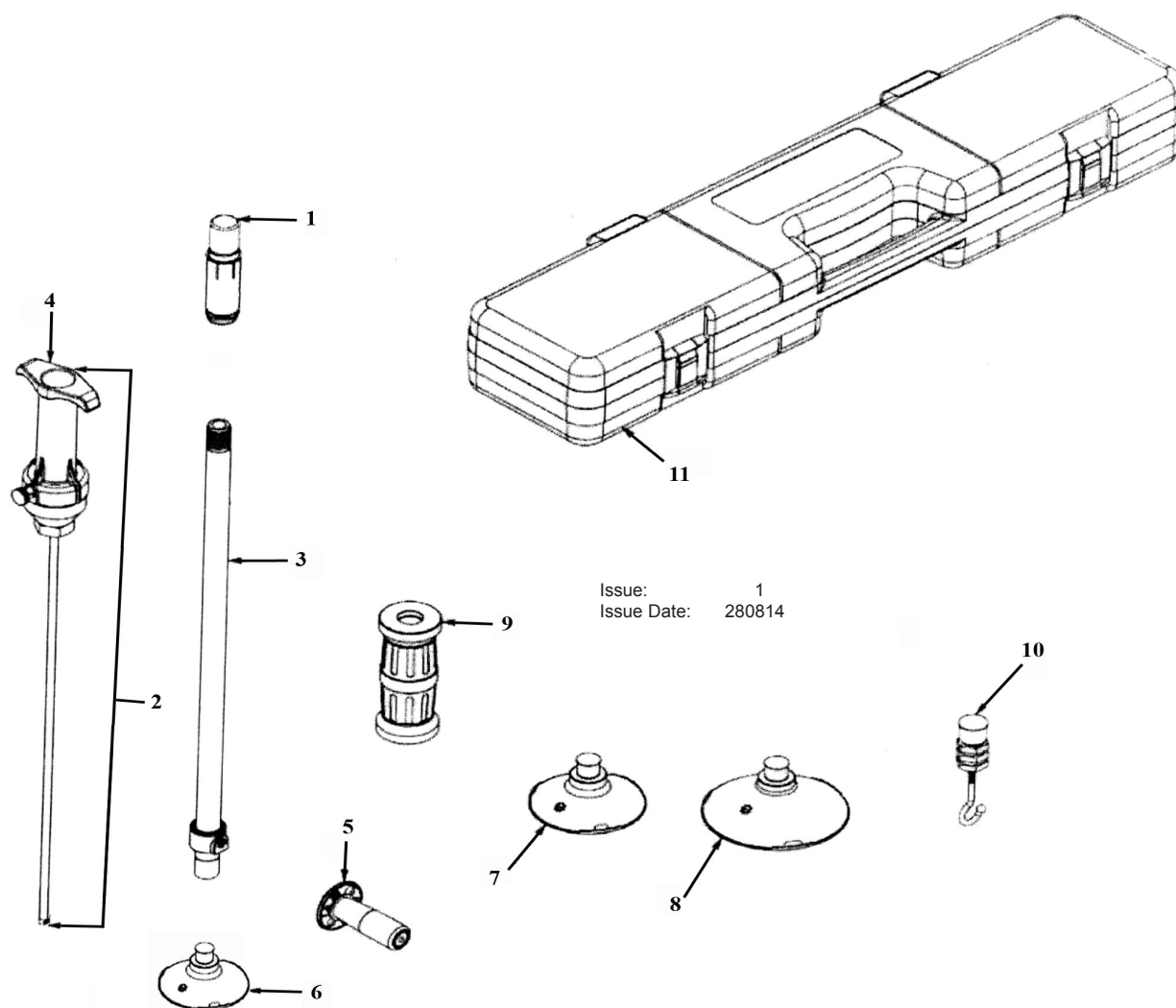




PARTS FOR:
AIR SUCTION DENT PULLER - PLUNGER TYPE
MODEL: **RE012**



ITEM	PART NO	DESCRIPTION
1	RE012.01	PLUNGER ASS'Y
2	RE012.02	VACUUM PUMP ASS'Y
3	RE012.03	VACUUM PUMP BODY
4	RE012.04A	HANDLE ASS'Y
	RE012.04B	O-RING FOR HANDLE (6.5mm X 2mm) (not shown)
5	RE012.05	SIDE HANDLE
6	RE012.06	SUCTION ASS'Y (75mm)
7	RE012.07	SUCTION ASS'Y (100mm)
8	RE012.08	SUCTION ASS'Y (125mm)
9	RE012.09	SLIDING HAMMER
10	RE012.10	HOOK
11	RE012.11	BLOW MOULD CASE

NOTE: It is our policy to continually improve products and as such we reserve the right to alter data, specifications and component parts without prior notice.

IMPORTANT: No liability is accepted for incorrect use of product.

WARRANTY: Guarantee is 12 months from purchase date, proof of which will be required for any claim.

INFORMATION: For a copy of our latest catalogue and promotions call us on 01284 757525 and leave your full name and address, including postcode.



Sole UK Distributor,
Sealey Group, Kempson Way,
Suffolk Business Park,
Bury St Edmunds, Suffolk, IP32 7AR



01284 757500



01284 703534



www.sealey.co.uk



sales@sealey.co.uk