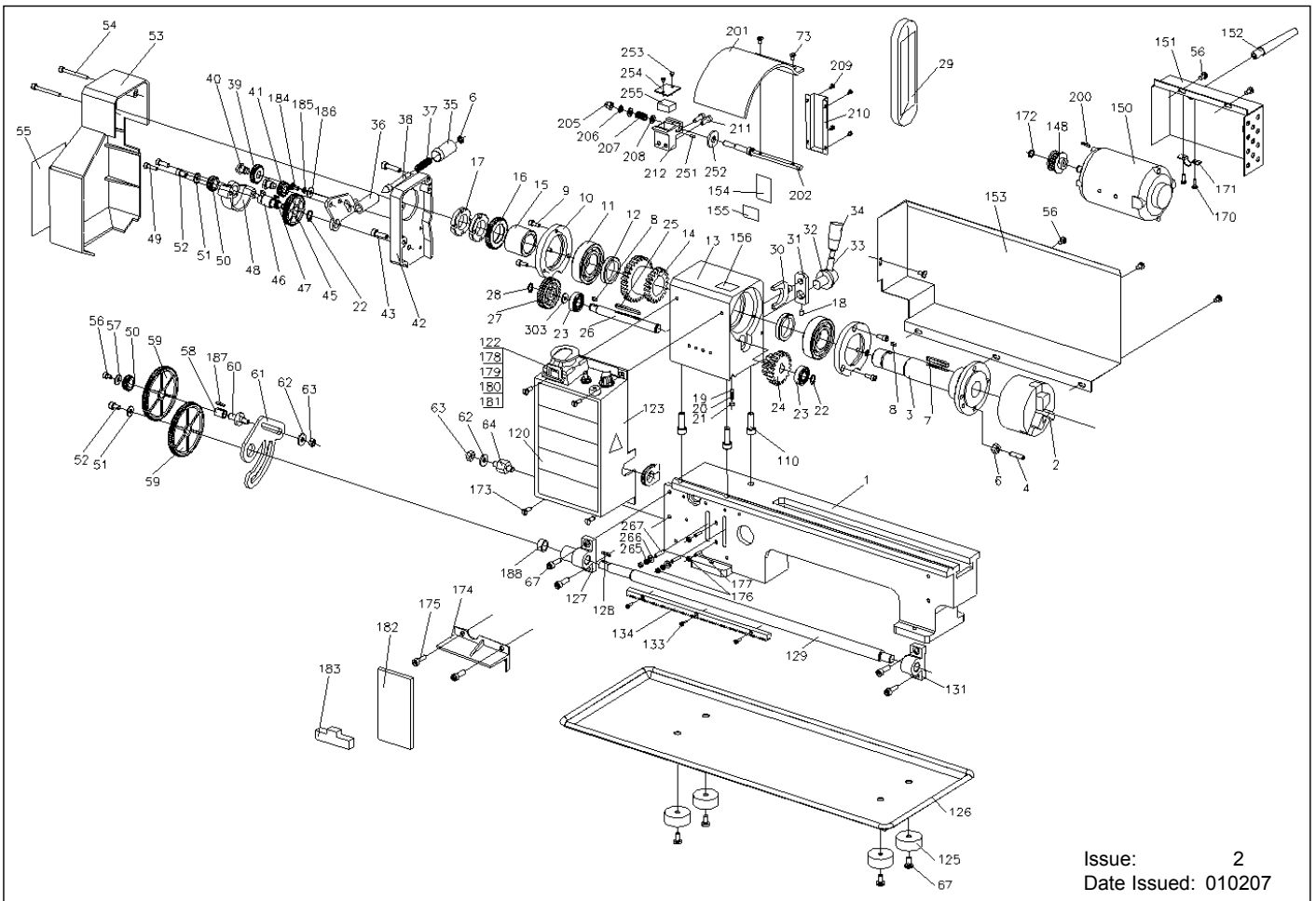


SEALEY

Quality MACHINERY

PARTS LIST FOR:
METAL WORKING LATHE
MODEL: **SM3002.V2**



Issue: 2
Date Issued: 010207

ITEM	PART NO.	DESCRIPTION	ITEM	PART NO.	DESCRIPTION	ITEM	PART NO.	DESCRIPTION
01.	SM3002.001	BASE	33.	SM3002.033	SHIFTING LEVER	64.	SM3002.064	SHAFT
02.	SM3002.002	3-JAW CHUCK	34.	SM3002.034	SHIFTING GRIP	65.	SM3002.065	DIAL 16T
03.	SM3002.003	SPINDLE	35.	SM3002.035	HANDLE	66.	SM3002.066	SHAFT
04.	SM3002.004	SCREW M6*25	36.	SM3002.036	HANDLE MOUNT	67.	SM3002.067	SCREW M6*16
06.	SM3002.006	NUT M6	37.	SM3002.037	SPRING	68.	SM3002.068	DIAL INDICATOR BODY
07.	SM3002.007	KEY M5*40	38.	SM3002.038	INDICATOR	69.	SM3002.069	SET SCREW M4*10
08.	SM3002.008	KEY M4*8	39.	SM3002.039	PINION 25T	70.	SM3002.070	APRON
09.	SM3002.009	SCREW M5*12	40.	SM3002.040	SUPPORT SCREW	71.	SM3002.071	GIB STRIP
10.	SM3002.010	COVER	41.	SM3002.041	PINION 20T	72.	SM3002.072	WASHER
12.	SM3002.012	SPACER	42.	SM3002.042	FIXED COVER	73.	SM3002.073	SCREW M4*8
13.	SM3002.013	HEAD STOCK CASTING	43.	SM3002.043	SCREW M6*20	74.	SM3002.074	SHAFT
14.	SM3002.014	H/L GEAR 21T/29T	44.	SM3002.044	SCREW M5*8	75.	SM3002.075	HALF NUT
15.	SM3002.015	SPACER	45.	SM3002.045	GEAR 45T	76.	SM3002.076	ANGLE BLOCK
16.	SM3002.016	SPUR GEAR 42T	46.	SM3002.046	SHAFT	77.	SM3002.077	SCREW M4*10
17.	SM3002.017	NUT M27*1.5	47.	SM3002.047	PARALLEL KEY 3*8	78.	SM3002.078	GROOVE CAM
18.	SM3002.018	SET SCREW M5*8	48.	SM3002.048	MOUNT	79.	SM3002.079	HANDLE
19.	SM3002.019	STEEL BALL (4.8MM)	49.	SM3002.049	SCREW M5*18	80.	SM3002.080	SHAFT
20.	SM3002.020	COMPRESSION SPRINGS	50.	SM3002.050	PINION 20T	81.	SM3002.081	FEEDING GEAR 11T/54T
21.	SM3002.021	SET SCREW M6*6	51.	SM3002.051	WASHER M6	82.	SM3002.082	FEEDING GEAR 24T
22.	SM3002.022	RETAINING RING M12	52.	SM3002.052	SCREW M6*8	83.	SM3002.083	SCREW M6*10
23.	B/6201ZZ	BEARING	53.	SM3002.053	COVER	84.	SM3002.084	WHEEL
24.	SM3002.024	H/L GEAR 12T/20T	54.	SM3002.054	SCREW M5*45	85.	SM3002.085	KNOB, SCREW + NUT
25.	SM3002.025	PARALLEL KEY M4*45	56.	SM3002.056	SCREW M5*8	86.	SM3002.86A	HANDLE
26.	SM3002.026	H/L GEAR SHAFT	57.	SM3002.057	WASHER M4	87.	SM3002.087	DIAL
27.	SM3002.027	PULLEY	58.	SM3002.058	BUSH W/KEY	88.	SM3002.088	BRACKET
28.	SM3002.028	RETAINING RING M10	59.	SM3002.059	GEAR 80T	89.	SM3002.089	FEEDING SCREW
29.	SM3002.029	TIMING BELT L136	60.	SM3002.060	SHAFT	90.	SM3002.090	NUT M5
30.	SM3002.030	SHIFTING FORK	61.	SM3002.061	SUPPORT PLATE	91.	SM3002.091	SCREW M6*12
31.	SM3002.031	SHIFTING ARM	62.	SM3002.062	WASHER M8	92.	SM3002.092	SLIDE PLATE
32.	SM3002.032	SHIFTING KNOB	63.	SM3002.063	NUT M8			

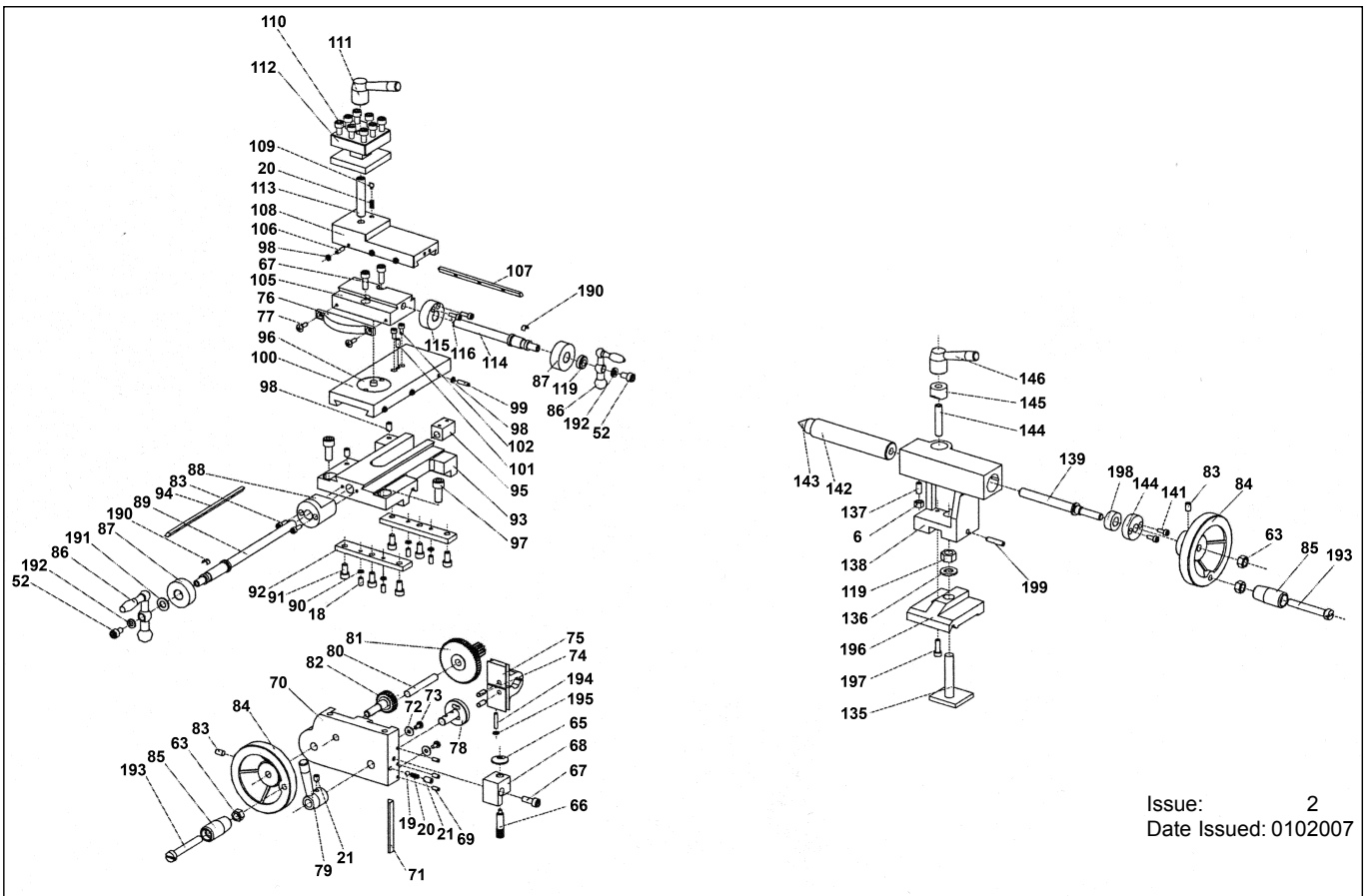
SEALEY Quality
MACHINERY

01284 757500

01284 703534

sales@sealey.co.uk

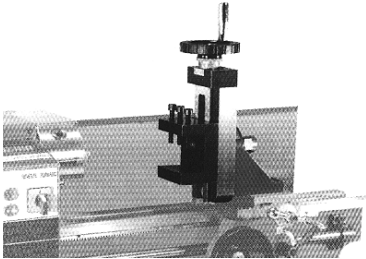
www.sealey.co.uk



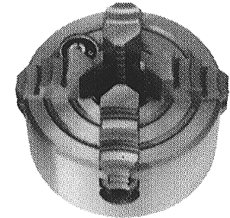
Issue: 2
 Date Issued: 0102007

ITEM	PART NO.	DESCRIPTION	ITEM	PART NO.	DESCRIPTION	ITEM	PART NO.	DESCRIPTION
93.	SM3002.093	SADDLE	139.	SM3002.139	TAILSTOCK SCREW	190.	SM3002-V2.190	SPRING
94.	SM3002.094	GIB STRIP	140.	SM3002.140	BRACKET	191.	SM3002-V2.191	WASHER
95.	SM3002.095	FEEDING NUT	141.	SM3002.141	SCREW M4*10	192.	SM3002-V2.192	SPRING WASHER
96.	SM3002.096	SWIVEL DISK	142.	SM3002.142	TAILSTOCK QUILL	193.	SM3002-V2.193	SCREW M8*55
97.	SM3002.097	SCREW M8*20	143.	SM3002.143	CENTRE	194.	SM3002-V2.194	SCREW M4*38
98.	SM3002.098	NUT M4	144.	SM3002.144	STUD M8*40	195.	SM3002-V2.195	NUT M4
99.	SM3002.099	SCREW M4*16	145.	SM3002.145	CLAMP	196.	SM3002-V2.196	TAILSTOCK PLATE
100.	SM3002.100	CROSS SLIDE	146.	SM3002.146	HANDLE	197.	SM3002-V2.197	SCREW M5*16
101.	SM3002.101	SCREW M5*10	148.	SM3002.148	PULLEY	198.	SM3002-V2.198	FLANGE
102.	SM3002.102	SCREW M4*8	150.	SM3002.150	MOTOR	199.	SM3002-V2.199	SCREW M5*25
105.	SM3002.105	COMPOUND REST	151.	SM3002.151	COVER	200.	SM3002-V2.200	KEY 3*12
106.	SM3002.106	SCREW M4*14	152.	SM3002.152	CABLE GLAND	201.	SM3002.CG	C/PLASTIC CHUCK GUARD
107.	SM3002.107	GIB STRIP	153.	SM3002.153	REAR SPLASH GUARD	202.	SM3002-V2.202	HINGE
108.	SM3002.108	COMPOUND REST	168.	SM3002-V2.168	RUBBER PAD	203.	SM3002-V2.203	WASHER
109.	SM3002.109	POSITIONING PIN	169.	SM3002-V2.169	BRACING	204.	SM3002-V2.204	NUT M4
110.	SM3002.110	SCREW M6*25	170.	SM3002-V2.170	SCREW M4*8	205.	SM3002-V2.205	SPRING WASHER
111.	SM3002.111	CLAMPING LEVER	171.	SM3002-V2.171	CLAMP BLOCK	206.	SM3002-V2.206	LARGE WASHER
112.	SM3002.112	TOOL REST	172.	SM3002-V2.172	CHECK RING	207.	SM3002-V2.207	SCREW M6*20
113.	SM3002.113	STUD	173.	SM3002-V2.173	SCREW M5*10	201	SM3002.CG	PLASTIC CHUCK GUARD
114.	SM3002.114	CROSS FEEDING SCREW	174.	SM3002-V2.174	PROTECTOR	202	SM3002-V2.202	HINGE
115.	SM3002.115	BRACKET	175.	SM3002-V2.175	SCREW M5*10	203	SM3002-V2.203	WASHER
116.	SM3002.116	SCREW M4*12	176.	SM3002-V2.176	NUT M6	204	SM3002-V2.204	NUT M4
119.	SM3002.119	NUT M18	177.	SM3002-V2.177	SCREW M6*25	205	SM3002-V2.205	SPRING WASHER
123.	SM3002.123	CONTROL BOX	178.	SM3002.170	EMERGENCY STOP SWITCH	206	SM3002-V2.206	LARGE WASHER
125.	SM3002.125	RUBBER FOOT	179.	SM3002.163	FUSE BOX	207	SM3002-V2.207	SCREW M6*20
126.	SM3002.126	CHIP TRAY	180.	SM3002-V2.180	VAR SPEED CONTROL KNOB	208	SM3002-V2.208	WASHER
127.	SM3002.127	BRACKET	181.	SM3002.169	F/O/R SWITCH	209	SM3002-V2.209	SCREW M3*4
128.	SM3002.128	KEY M3*16	182.	SM3002.164	PC BOARD	210	SM3002-V2.210	SWITCH COVER
129.	SM3002.129	LEAD SCREW	183.	SM3002.165	FILTER	211	SM3002-V2.211	SCREW M5*16
131.	SM3002.131	BRACKET	184.	SM3002-V2.184	SCREW M5*10	212	SM3002-V2.212	FIXED COVER
133.	SM3002.133	SCREW M3*10	185.	SM3002-V2.185	SPRING WASHER	251	SM3002-V2.251	ROUND PIN
134.	SM3002.134	RACK	186.	SM3002-V2.186	WASHER	252	SM3002-V2.252	ROTATE PLATE
135.	SM3002.135	CLAMP PLATE	187.	SM3002-V2.187	KEY 3*16	253	SM3002-V2.253	SCREW (2.9*4.5)
136.	SM3002.136	WASHER M10	188.	SM3002-V2.188	SPACER	254	SM3002-V2.254	COVER
137.	SM3002.137	SCREW M5*16	189.	SM3002-V2.189	OIL CUP	255	SM3002-V2.255	MICRO SWITCH

These accessories are available from your Sealey dealer.

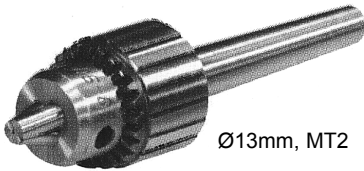


Milling Attachment - SM3002MA



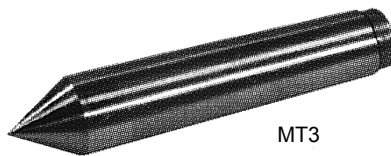
Ø80mm

4-Jaw Chuck - SM30024JC



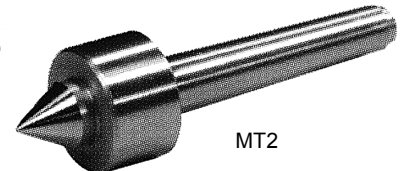
Ø13mm, MT2

Tailstock Chuck - SM3002TC



MT3

Spindle Centre - SM3002SC

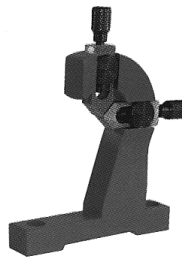


MT2

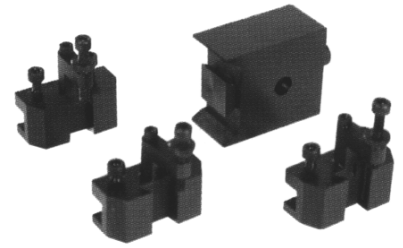
Rolling Centre - SM3002RC



Steady Rest - SM3002SR



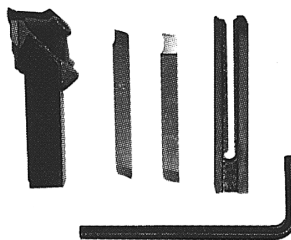
Follow Rest - SM3002FR



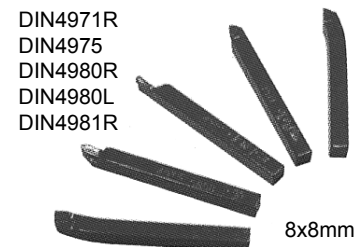
Quick-Change Cutter Rest - SM3002QCCR



Lathe Dog - SM3002LD



2pc Cutter Set - SM3002CS2

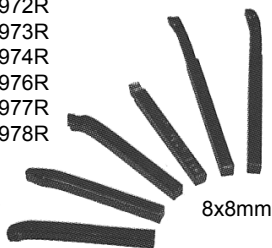


DIN4971R
 DIN4975
 DIN4980R
 DIN4980L
 DIN4981R

8x8mm

5pc Cutter Set - SM3002CS5

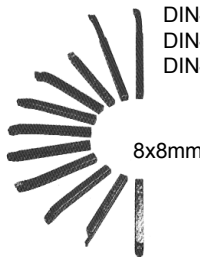
DIN4972R
 DIN4973R
 DIN4974R
 DIN4976R
 DIN4977R
 DIN4978R



8x8mm

6pc Cutter Set - SM3002CS6

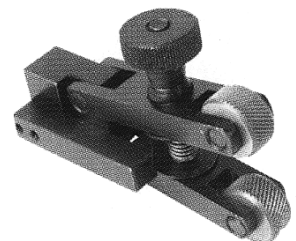
DIN4971R
 DIN4972R
 DIN4973R
 DIN4974R
 DIN4975
 DIN4976
 DIN4977R
 DIN4978R



8x8mm

11pc Cutter Set - SM3002CS11

DIN4980L
 DIN4980R
 DIN4981R



Knurling Tool Holder - SM3002KTH