

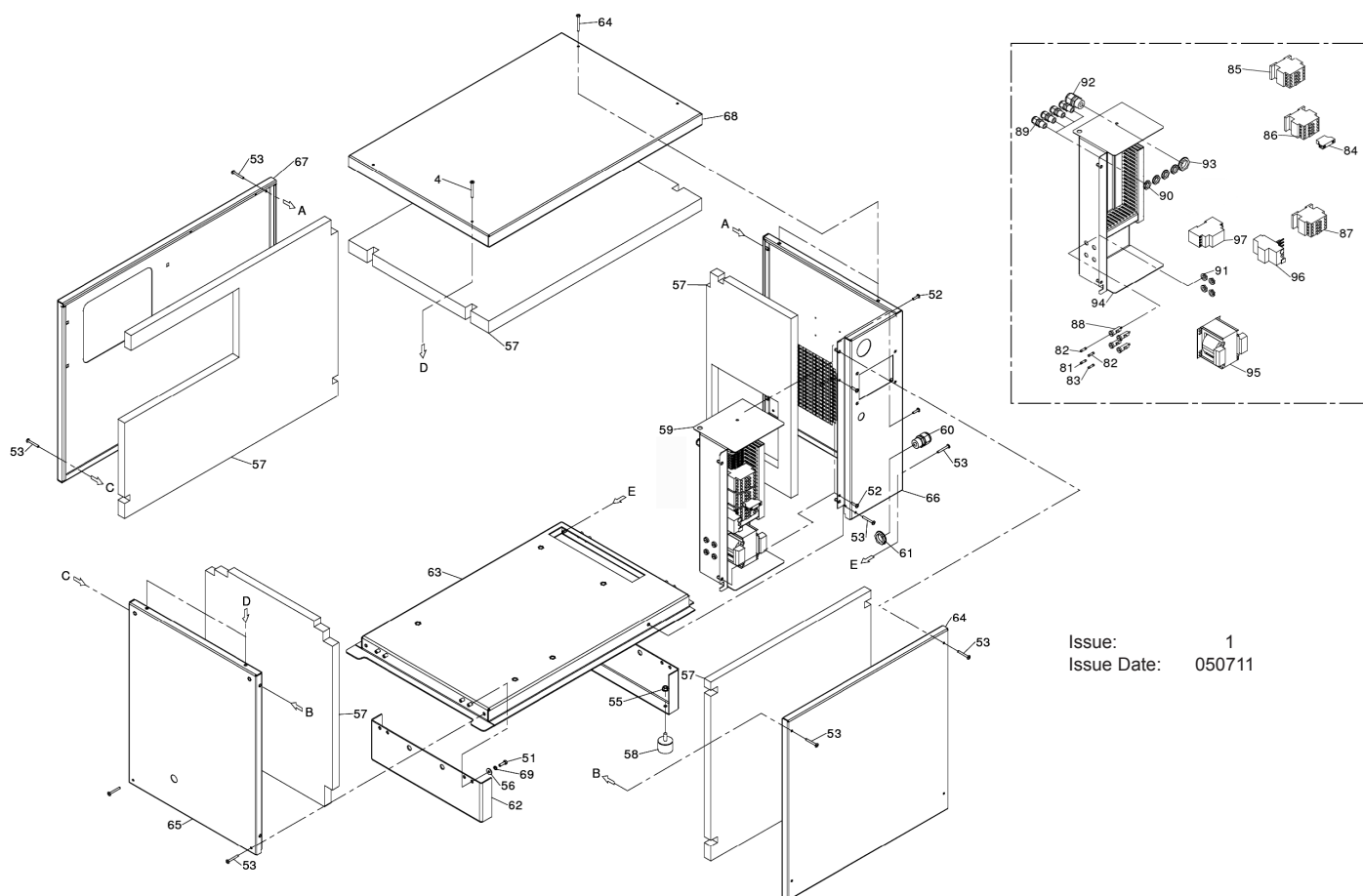
ITEM	PART NO	DESCRIPTION	ITEM	PART NO	DESCRIPTION	ITEM	PART NO	DESCRIPTION
1	SAC4094910000	PANEL KIT	20	SAC7083290000	ELBOW	38	SAC7406640000	PULLEY
2	SAC7011160000	BOLT (M10x30)	21	SAC7083940000	JOINT	39	SAC7407500000	PULLEY
3	SAC7011140000	SCREW (M10x20)	22	SAC7085190000	JOINT	40	SAC7423310000	ELECTRIC MOTOR
4	SAC7012610000	SCREW (M8x30)	23	SAC7085230000	JOINT	41	SAC7511790000	SUPPORT
5	SAC7014420000	BOLT (M5x20)	24	SAC7085700000	CONNECTOR	42	SAC7433850000	ELECTRONIC PANEL
6	SAC7020080000	NUT (M10)	25	SAC7086720000	JOINT	43	SAC7457030000	BELT TENSIONER
7	SAC7020240000	NUT (M8)	26	SAC7110400000	PRESSURE GAUGE	44	SAC7517530000	RADIATOR
8	SAC7030040000	WASHER	27	SAC7211141150	OIL FILTER CARTRIDGE	44A	SAC7513660000	RADIATOR SUPPORT
9	SAC7030060000	WASHER	28	SAC7211960000	OIL SEPARATOR CARTRIDGE	44B	SAC7194430000	FAN
10	SAC7030670000	WASHER	29	SAC7216050000	AIR FILTER HOUSING	44C	SAC7194430010	FAN COVER
11	SAC7030680000	WASHER	29A	SAC7212160010	AIR FILTER	45	SAC7566200000	THERMAL SWITCH
12	SAC7043140000	CLAMP	30	SAC7233610000	RILSAN HOSE KIT	46	SAC7011170000	BOLT (M10x35)
13	SAC6002803838	JOINT	31	SAC7235870000	DELIVERY TUBE	47	SAC7081250000	JOINT
14	SAC7080560000	ELBOW	32	SAC7235860000	OUTLET HOSE	48	SAC7012240000	SCREW (M5x15)
15	SAC7081340000	JOINT	33	SAC7238580000	DELIVERY TUBE	49	SAC7011530000	SCREW (M10x16)
16	SAC7085540000	JOINT	34	SAC7250690000	PRESSURE SWITCH	50	SAC7014540000	SCREW (M10x45)
17	SAC7081311150	JOINT	35	SAC4091080000	EMERGENCY PUSH BUTTON	50A	SAC7172540000	BASE
18	SAC7082700000	JOINT 3-WAY	36	SAC7371010000	BELT	50B	SAC7364190000	SHOCK ABSORBER
19	SAC7083280000	ELBOW	37	SAC7385180000	MOTOR			

NOTE: It is our policy to continually improve products and as such we reserve the right to alter data, specifications and component parts without prior notice.

IMPORTANT: No liability is accepted for incorrect use of product.

WARRANTY: Guarantee is 12 months from purchase date, proof of which will be required for any claim.

INFORMATION: For a copy of our latest catalogue and promotions call us on 01284 757525 and leave your full name and address, including postcode.



Issue: 1
 Issue Date: 050711

ITEM	PART NO	DESCRIPTION	ITEM	PART NO	DESCRIPTION
51	SAC7011040000	SCREW (M6x20)	81	SAC7431640000	FUSE
52	SAC7014420000	BOLT (M5x20)	82	SAC7432720000	FUSE
53	SAC7014440000	SCREW (M5x40)	83	SAC7432730000	FUSE
54	SAC7014450000	SCREW (M5x50)	84	SAC7432780000	CONTACT
55	SAC7020240000	NUT (M8)	85	SAC7432260000	CONTACTOR (K1 & K2)
56	SAC7030190000	WASHER (6x18)	86	SAC7432260000	CONTACTOR (K1 & K2)
57	SAC7213520000	SOUNDPROF KIT	87	SAC7433510000	CONTACTOR (K3)
59	SAC7414750000	CONTROL BOX	88	SAC7435000000	FUSE HOLDER
60	SAC7500650000	ADJUSTER	89	SAC7500430000	HEIGHT ADJUSTER
61	SAC7500650010	LOCK NUT (M25)	90	SAC7500430010	LOCK NUT (M16x1.5)
62	SAC5167430008	FOOT	91	SAC7500560010	LOCK NUT (M12)
63	SAC7514120000	BASE	92	SAC7500650000	ADJUSTER
64	SAC7514130000	FRONT PANEL	93	SAC7500650010	LOCK NUT (M25)
65	SAC7514140000	SIDE PANEL	94	SAC7514180000	ELECTRIC BOX
66	SAC7514150000	SIDE PANEL	95	SAC7564340000	TRANSFORMER
67	SAC7514160000	REAR PANEL	96	SAC7432420000	THERMAL RELAY
68	SAC7514170000	UPPER PANEL	97	SAC7434070000	RELAY
69	SAC7031030000	WASHER			

NOTE: It is our policy to continually improve products and as such we reserve the right to alter data, specifications and component parts without prior notice.

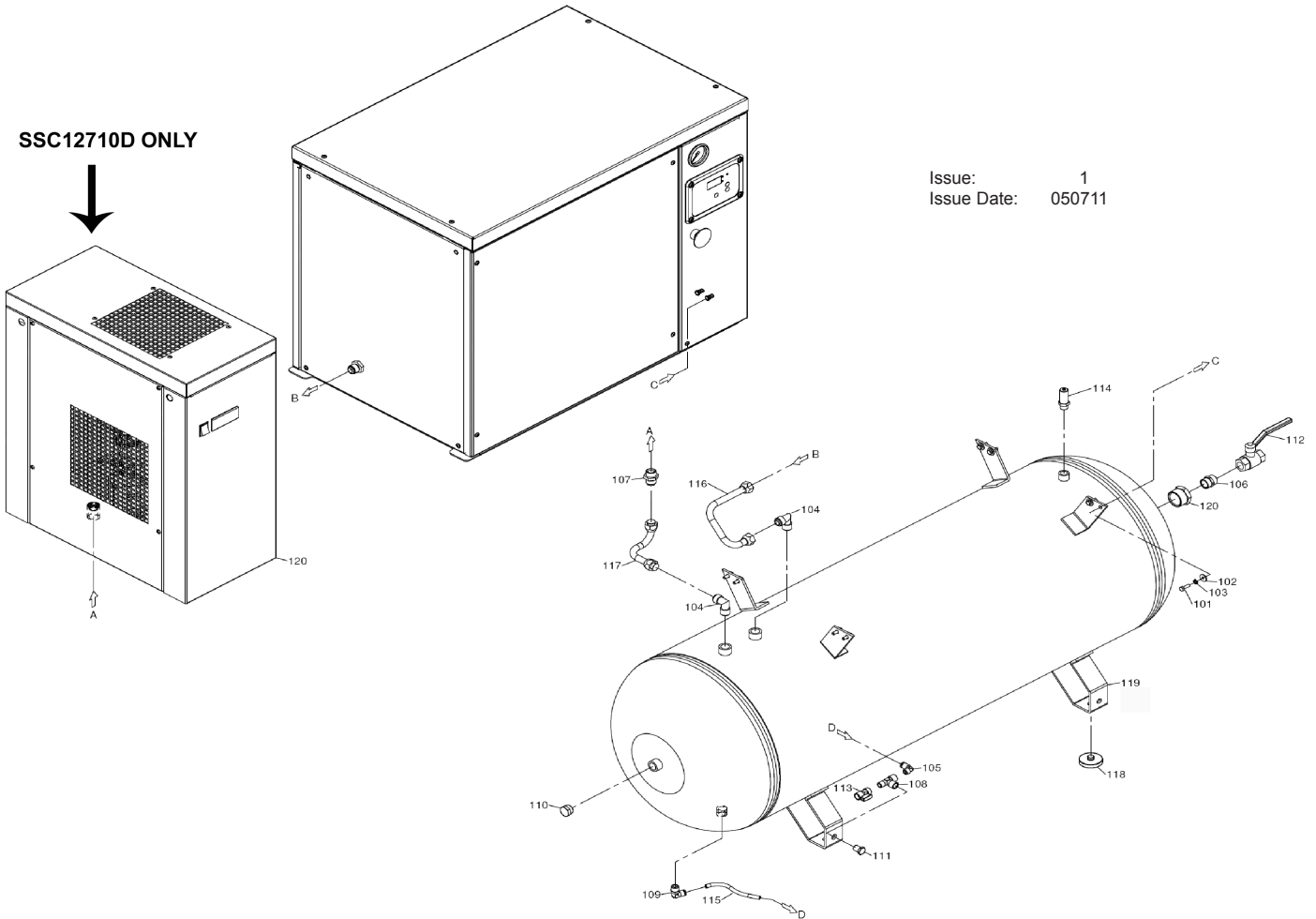
IMPORTANT: No liability is accepted for incorrect use of product.

WARRANTY: Guarantee is 12 months from purchase date, proof of which will be required for any claim.

INFORMATION: For a copy of our latest catalogue and promotions call us on 01284 757525 and leave your full name and address, including postcode.

SSC12710D ONLY

Issue: 1
 Issue Date: 050711



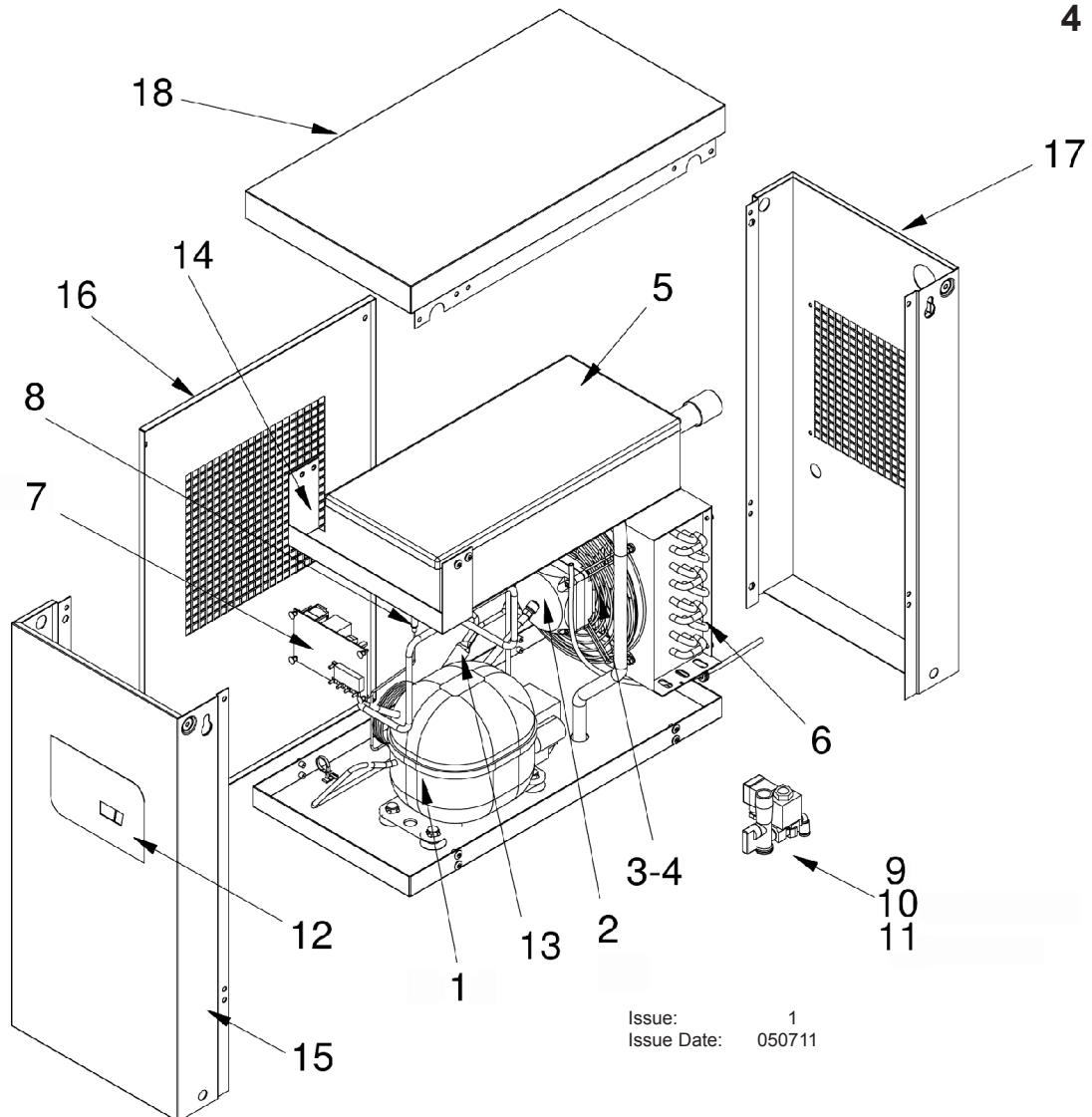
ITEM	PART NO	DESCRIPTION
101	SAC7011040000	SCREW (M6x20)
102	SAC7030190000	WASHER (6x18)
103	SAC7031030000	WASHER
104	SAC7080160000	ELBOW
105	SAC7080970000	ELBOW
106	SAC7081010000	JOINT
107	SAC7081311150	JOINT
108	SAC7082050000	JOINT 3-WAY
109	SAC7082820000	ELBOW
110	SAC7090030000	PLUG 1/2
111	SAC7090090000	PLUG 1/4"
112	SAC7130150000	TAP
113	SAC7130170000	TAP
114	SAC7192090000	SAFETY VALVE
115	SAC7230080000	HOSE
116	SAC7235010000	DELIVERY TUBE
117	SAC7235020000	HOSE
118	SAC7360400000	RUBBER FOOT
119	SAC5158860008	TANK 300ltr
121	SAC7085120000	TANK PLUG

NOTE: It is our policy to continually improve products and as such we reserve the right to alter data, specifications and component parts without prior notice.

IMPORTANT: No liability is accepted for incorrect use of product.

WARRANTY: Guarantee is 12 months from purchase date, proof of which will be required for any claim.

INFORMATION: For a copy of our latest catalogue and promotions call us on 01284 757525 and leave your full name and address, including postcode.



Issue: 1
 Issue Date: 050711

ITEM	PART NO	DESCRIPTION
1	SAC7566260010	REFRIGERANT COMPRESSOR 230V
2	SAC7566260020	FAN MOTOR 230V
3	SAC7566260030	FAN BLADE
4	SAC7566260040	GRID
5	SAC7566260050	HEAT EXCHANGER BASE
6	SAC7566260060	CONDENSER
7	SAC7566260070	ELECTRIC CONTROLLER 230V
8	SAC7566260080	PROBE
9	SAC7566260090	TAP WITH STRAINER
10	SAC7566260100	SOLENOID DRAIN VALVE 230V
11	SAC7566260110	DRAIN SOLENOID VALVE COIL 230V
12	SAC7566260120	CONTROL PANEL COVER
13	SAC7566260130	FILTER DRYER
14	SAC7566260140	HEAT EXCHANGER BRACKET
15	SAC7566260150	FRONT PANEL
16	SAC7566260160	SIDE PANEL
17	SAC7566260170	REAR PANEL
18	SAC7566260180	COVER

NOTE: It is our policy to continually improve products and as such we reserve the right to alter data, specifications and component parts without prior notice.

IMPORTANT: No liability is accepted for incorrect use of product.

WARRANTY: Guarantee is 12 months from purchase date, proof of which will be required for any claim.

INFORMATION: For a copy of our latest catalogue and promotions call us on 01284 757525 and leave your full name and address, including postcode.