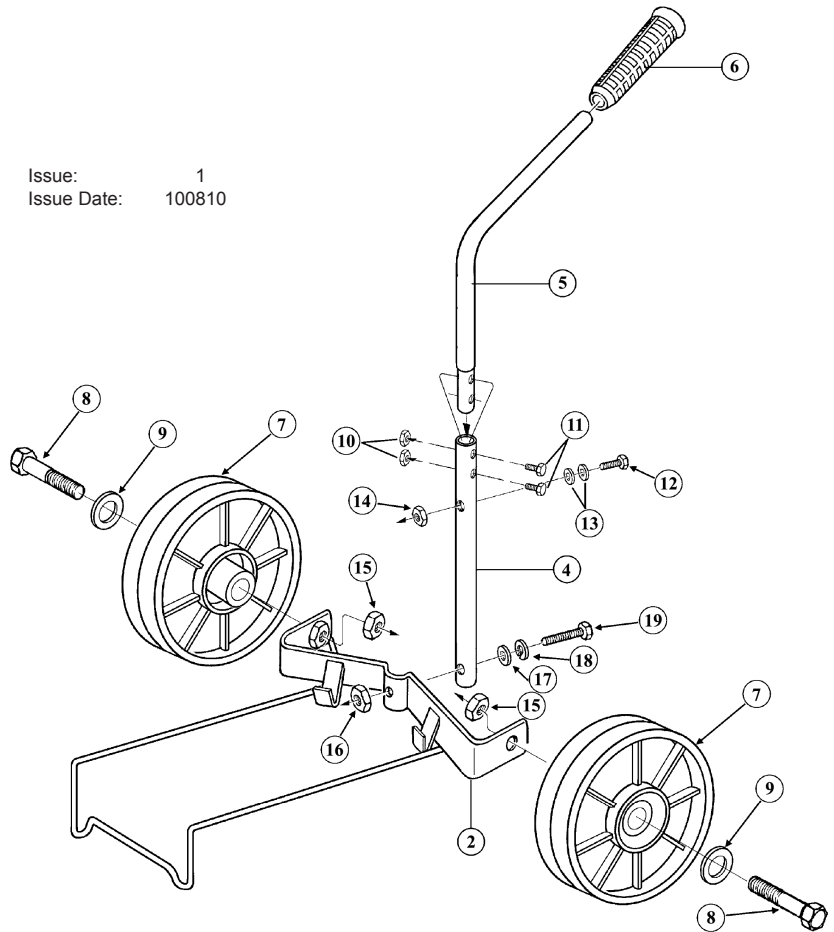


Issue: 1  
Issue Date: 100810



ITEM	PART NO	DESCRIPTION
22	TP17.22	OIL VALVE CONTROLLER
23	TP17.23	CYLINDER
24	TP17.24	PUMP SET
25	TP17.25	O-RING
26	TP17.26	WASHER
27	TP17.27	NUT
28	TP17.28	VALVE ACTION SPINDLE
29	TP17.29	HYDRAULIC CONNECTOR
30	TP17.30	SPRING
31	TP17.31	PISTON
32	TP17.32	WASHER
33	TP17.33	O-RING
34	TP17.34	WASHER
35	TP17.35	NUT 5/16"

ITEM	PART NO	DESCRIPTION
2	TP17.02	BASE FRAME
4	TP17.04	STRAIGHT TUBE
5	TP17.05	CURVED TUBE
6	TP17.06	HANDLE GRIP
7	TP17.07	WHEEL
8	TP17.08	HEX SCREW 1/2" x 2-1/2"
9	TP17.09	WASHER 1/2"
10	TP17.10	NUT 1/4"
11	TP17.11	HEX SCREW 1/4" x 1-1/4"
12	TP17.12	HEX SCREW 5/16" x 1-3/4"
13	TP17.13	WASHER 5/16"
14	TP17.14	NUT 5/16"
15	TP17.15	NUT 1/2"
16	TP17.16	NUT 3/8"
17	TP17.17	WASHER 3/8"
18	TP17.18	SPRING WASHER 3/8"
19	TP17.19	HEX SCREW 3/8" x 1-3/4"

**NOTE:** It is our policy to continually improve products and as such we reserve the right to alter data, specifications and component parts without prior notice.

**IMPORTANT:** No liability is accepted for incorrect use of product.

**WARRANTY:** Guarantee is 12 months from purchase date, proof of which will be required for any claim.

**INFORMATION:** For a copy of our latest catalogue and promotions call us on 01284 757525 and leave your full name and address, including postcode.