



INSTRUCTIONS FOR:  
**HEAVY-DUTY LEVER PUMP  
HIGH FLOW**  
Model No: **TP6801**

Thank you for purchasing a Sealey product. Manufactured to a high standard this product will give you years of trouble free performance if these instructions are carefully followed and the product is correctly maintained.



**IMPORTANT: PLEASE READ THESE INSTRUCTIONS CAREFULLY. NOTE THE SAFE OPERATIONAL REQUIREMENTS, WARNINGS AND CAUTIONS. USE THIS PRODUCT CORRECTLY AND WITH CARE FOR THE PURPOSE FOR WHICH IT IS INTENDED. FAILURE TO DO SO MAY CAUSE DAMAGE OR PERSONAL INJURY AND WILL INVALIDATE THE WARRANTY. PLEASE RETAIN THESE INSTRUCTIONS FOR FUTURE USE.**

## 1. SAFETY

- p **WARNING!** Ensure health & safety, local authority, and general workshop practice regulations are strictly adhered to when using this equipment.
- 3 Familiarise yourself with product application and limitations, as well as the specific potential hazards peculiar to this product.
  - 3 Maintain the pump in good condition (use an authorised service agent).
  - 3 Replace or repair damaged parts. *Use genuine parts only. Non authorised parts will invalidate the warranty.*
  - 3 Use only to pump NON-Corrosive fluids such as oil, anti-freeze, degreasants, solvents, agricultural and industrial chemicals.
  - 3 Ensure safety eye protection and protective clothing are worn when using this product.
  - 3 Keep the work area clean, uncluttered and ensure there is adequate lighting.
  - 3 Maintain correct balance and footing. Ensure the floor is not slippery and wear non slip shoes.
  - 3 Keep children and unauthorised persons away from the working area.
  - 3 Dispose of waste liquids in accordance with local authority regulations.
  - 7 **DO NOT** use to extract corrosive fluids.
  - 7 **DO NOT** dismantle, tamper with or adapt the pump for any purpose other than for which it is designed.
  - 7 **DO NOT** use the unit if it has been dropped or mishandled, check the unit to ensure there is no damage.
  - 7 **DO NOT** use the pump as a handle to move the fluid drum.
  - 3 Keep the pump clean and store in a safe dry, childproof location.

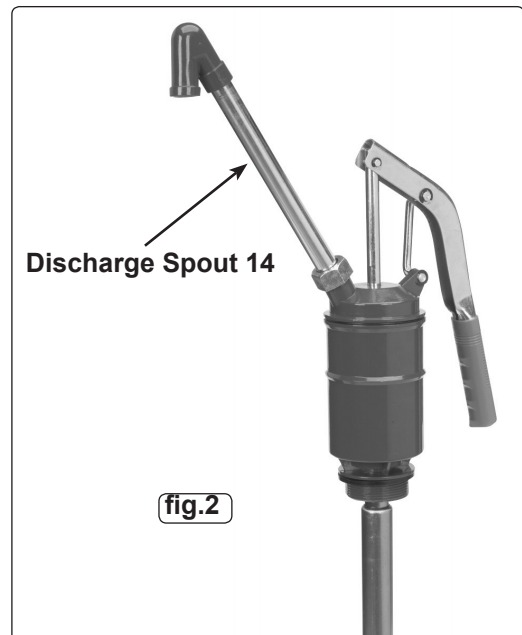
p **WARNING! DO NOT** allow uncontrolled discharge of fluids thus polluting the environment.

## 2. INTRODUCTION

Steel barrelled, self priming, lever pump. Supplied with 2" BSP adaptor and dip-tube suitable for 50 to 200ltr drums. Suitable for oils, antifreeze, degreasants and other non-corrosive fluids. High flow unit delivers approximately 540ml per stroke. Supplied with two delivery nozzles, one standard swan neck and one acute angle with filter for removing impurities from fluids.

## 3. INSTALLATION

- 3.1. Attach the discharge spout (14 or 14A) to the pump ensuring that seal (16) is correctly fitted.
- 3.2. Screw the suction tube (19) into the underside of the pump.
- 3.3. Insert the pump into the 2" BSP drum opening and hand tighten.



**NOTE:** It is our policy to continually improve products and as such we reserve the right to alter data, specifications and component parts without prior notice.


**IMPORTANT:** No liability is accepted for incorrect use of this product.

**WARRANTY:** Guarantee is 12 months from purchase date, proof of which will be required for any claim.

**INFORMATION:** For a copy of our latest catalogue and promotions call us on 01284 757525 and leave your full name and address, including postcode.



Sole UK Distributor, Sealey Group,  
Kempson Way, Suffolk Business Park,  
Bury St. Edmunds, Suffolk,  
IP32 7AR

 01284 757500

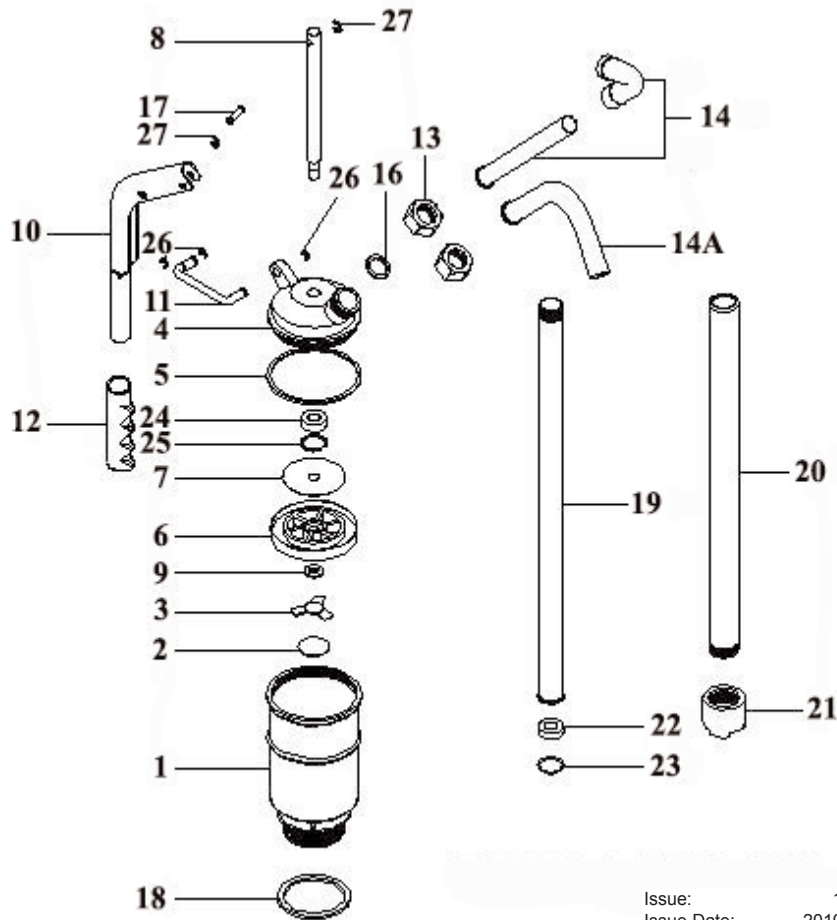
 01284 703534

 [www.sealey.co.uk](http://www.sealey.co.uk)

 [sales@sealey.co.uk](mailto:sales@sealey.co.uk)



PARTS FOR:  
**HEAVY-DUTY LEVER PUMP HIGH FLOW**  
 MODEL: **TP6801**



Issue: 1  
 Issue Date: 201008

ITEM	PART NO	DESCRIPTION	ITEM	PART NO	DESCRIPTION
1	TP6801.01	BODY	14A	TP6801.14A	DISCHARGE SPOUT (ANGLED)
2	TP6801.02	CHECK PLATE	16	TP6801.16	SPOUT SEAL
3	TP6801.03	SET PLATE	17	TP6801.17	ROLL PIN
4	TP6801.04	COVER	18	TP6801.18	GASKET
5	TP6801.05	BODY GASKET	19	TP6801.19	SUCTION TUBE
6	TP6801.06	CHECK PLATE	20	TP6801.20	EXTENSION TUBE
7	TP6801.07	PISTON	21	TP6801.21	STRAINER
8	TP6801.08	PISTON ROD	22	TP6801.22	TUBE SEAL
9	TP6801.09	WASHER	23	TP6801.23	TUBE SEAL
10	TP6801.10	HANDLE	24	TP6801.24	SHAFT PACKING
11	TP6801.11	U-BAR HOLDER	25	TP6801.25	RETAINING SPRING
12	TP6801.12	HANDLE COVER	26	TP6801.26	RETAINING SPRING
13	TP6801.13	SPOUT NUT	27	TP6801.27	RETAINING SPRING
14	TP6801.14	DISCHARGE SPOUT (c/w spout cap)			



Sole UK Distributor, Sealey Group,  
 Kempson Way, Suffolk Business Park,  
 Bury St. Edmunds, Suffolk,  
 IP32 7AR

01284 757500

01284 703534



www.sealey.co.uk



sales@sealey.co.uk