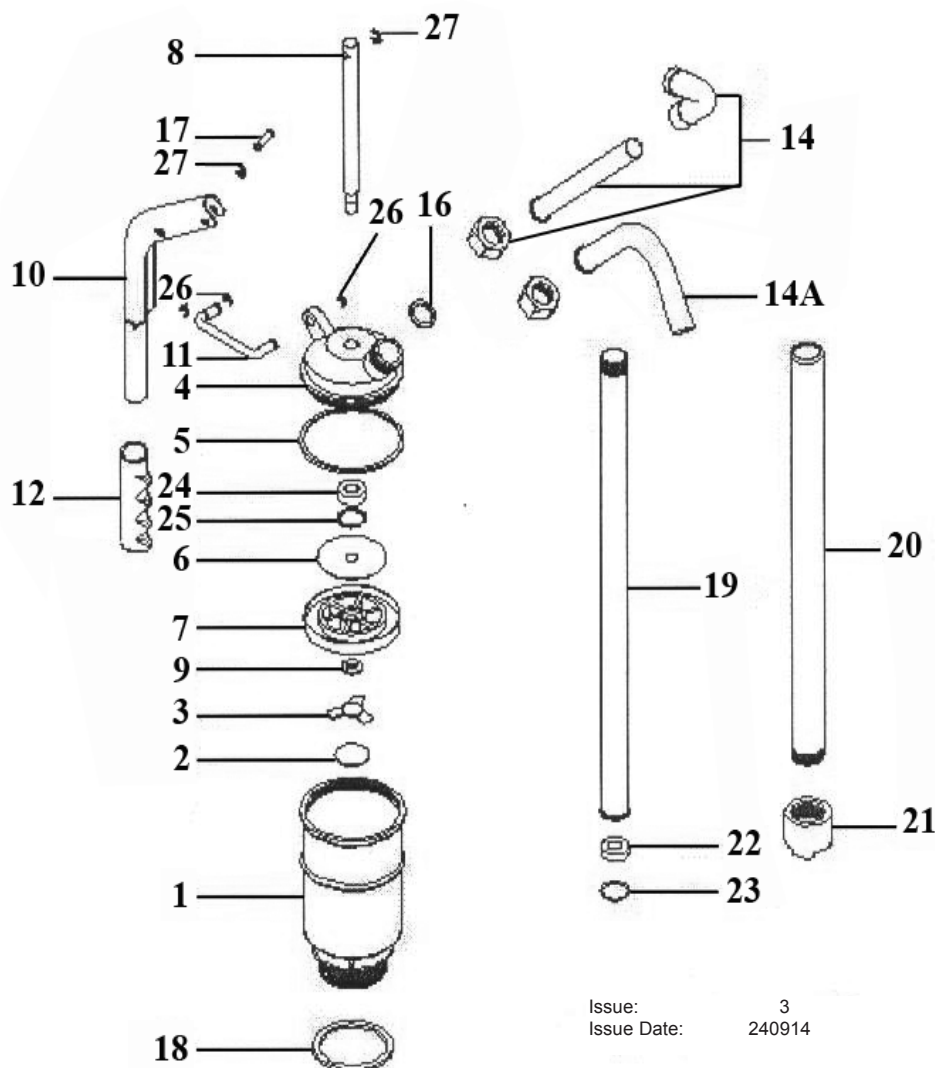




PARTS FOR:
HEAVY-DUTY LEVER PUMP HIGH FLOW
 MODEL: **TP6801**



Issue: 3
 Issue Date: 240914

ITEM	PART NO	DESCRIPTION	ITEM	PART NO	DESCRIPTION
1	TP6801.01	BODY	15	TP6801.15	SPOUT CAP
2	TP6801.02	CHECK PLATE	16	TP6801.16	SPOUT SEAL
3	TP6801.03	SET PLATE	17	TP6801.17	ROLL PIN
4	TP6801.04	COVER	18	TP6801.18	GASKET
5	TP6801.05	BODY GASKET	19	TP6801.19	SUCTION TUBE
6	TP6801.06	CHECK PLATE	20	TP6801.20	EXTENSION TUBE
7	TP6801.07	PISTON	21	TP6801.21	STRAINER
8	TP6801.08	PISTON A'SSY c/w PLATE, PISTON, ROD & WASHER	22	TP6801.22	TUBE SEAL
9	TP6801.09	WASHER	23	TP6801.23	TUBE SEAL
10	TP6801.10	HANDLE & COVER	24	TP6801.24	SHAFT PACKING
11	TP6801.11	U-BAR HOLDER	25	TP6801.25	RETAINING SPRING
12	TP6801.12	HANDLE COVER	26	TP6801.26	RETAINING SPRING
14	TP6801.14	DISCHARGE SPOUT (c/w SPOUT CAP & SPOUT NUT)	27	TP6801.27	RETAINING SPRING
14A	TP6801.14A	DISCHARGE SPOUT (ANGLED)			

NOTE: It is our policy to continually improve products and as such we reserve the right to alter data, specifications and component parts without prior notice.

IMPORTANT: No liability is accepted for incorrect use of product.

WARRANTY: Guarantee is 12 months from purchase date, proof of which will be required for any claim.

INFORMATION: For a copy of our latest catalogue and promotions call us on 01284 757525 and leave your full name and address, including postcode.



Sole UK Distributor,
 Sealey Group, Kempson Way,
 Suffolk Business Park,
 Bury St Edmunds, Suffolk, IP32 7AR



01284 757500



01284 703534



www.sealey.co.uk



sales@sealey.co.uk