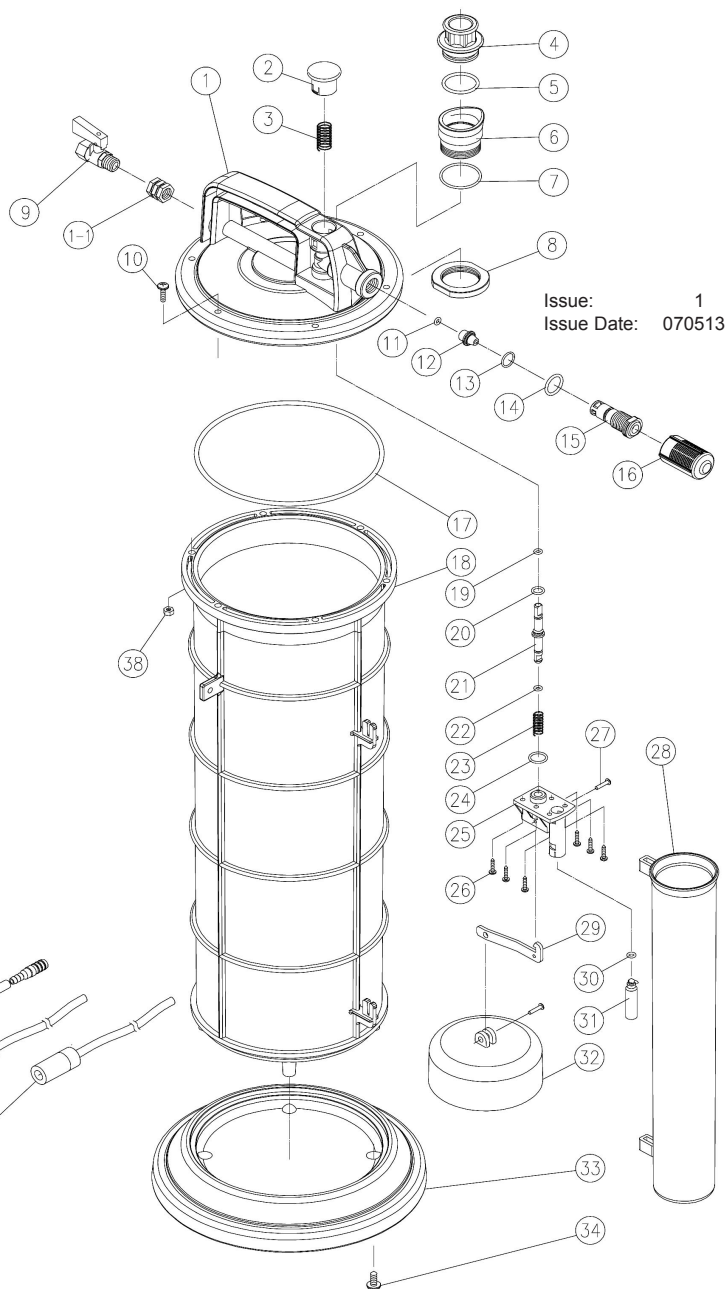


PARTS FOR:
VACUUM OIL & FLUID EXTRACTOR
AIR OPERATED 9ltr
MODEL: TP6903.V2

ITEM	PART NO	DESCRIPTION
1	TP6903.V2-01	COVER HOUSING
1-1	TP6903.V2-01A	INSERT NUT
2	TP6903.V2-02	PUSH BUTTON
3	TP6903.V2-03	SPRING
4	TP6903.V2-04	FLUID INLET COUPLER
5	TP6903.V2-05	O-RING 25.2x2.7mm
6	TP6903.V2-06	FLUID OUTLET HOUSING
7	TP6903.V2-07	O-RING 31x1.0mm
8	TP6903.V2-08	LOCK NUT
9	TP6903.V2-09	AIR VALVE
10	TP6903.V2-10	SCREW M5x20mm
11	TP6903.V2-11	O-RING 4.8x1.5mm
12	TP6903.V2-12	VACUUM VALVE
13	TP6903.V2-13	O-RING 11.0x2.0mm
14	TP6903.V2-14	O-RING 16.3x2.4mm
15	TP6903.V2-15	VACUUM BODY
16	TP6903.V2-16	MUFFLER SHELL
17	TP6903.V2-17	O-RING 154.3x3.5mm
18	TP6903.V2-18	RESERVOIR TANK
19	TP6903.V2-19	O-RING 3.8x1.9mm
20	TP6903.V2-20	O-RING 6.0x2.0mm
21	TP6903.V2-21	SHAFT
22	TP6903.V2-22	O-RING 3.8 x 1.9mm
23	TP6903.V2-23	SPRING
24	TP6903.V2-24	O-RING 13.0x2.0mm
25	TP6903.V2-25	SAFETY VALVE HOUSING
26	TP6903.V2-26	SCREW 3.8x10mm
27	TP6903.V2-27	PIN
28	TP6903.V2-28	TUBE STORAGE UNIT
29	TP6903.V2-29	ARM
30	TP6903.V2-30	O-RING 4.47x1.78mm
31	TP6903.V2-31	SAFETY CUP
32	TP6903.V2-32	FLOAT
33	TP6903.V2-33	BASE
34	TP6903.V2-34	SCREW 6X15MM
35	TP6903.V2-35	MAIN SUCTION TUBE (c/w ADAPTOR)
36	TP6903.V2-36	EXTRACTING TUBE (c/w ADAPTOR)
37	TP6903.V2-37	BRAKE TUBE (c/w RUBBER FITTING)
38	TP6903.V2-38	NUT M5



Issue: 1
Issue Date: 070513

NOTE: It is our policy to continually improve products and as such we reserve the right to alter data, specifications and component parts without prior notice.

IMPORTANT: No liability is accepted for incorrect use of product.

WARRANTY: Guarantee is 12 months from purchase date, proof of which will be required for any claim.

INFORMATION: For a copy of our latest catalogue and promotions call us on 01284 757525 and leave your full name and address, including postcode.