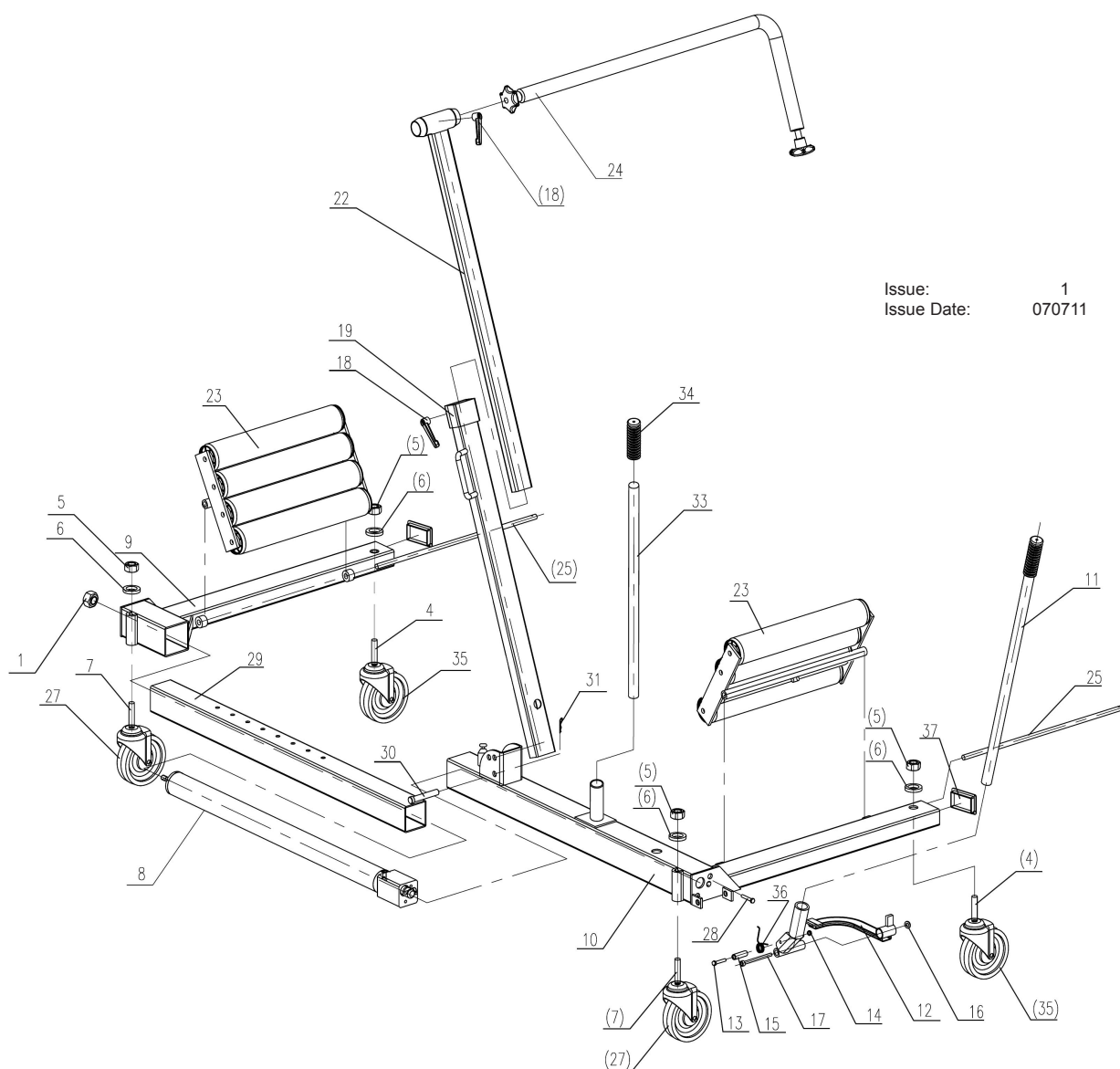


PARTS FOR:
WHEEL REMOVAL TROLLEY 1200kg CAPACITY
MODEL: W1200T



Issue: 1
 Issue Date: 070711

ITEM	PART NO	DESCRIPTION	ITEM	PART NO	DESCRIPTION
1	W1200T.01	NUT (M14)	19	W1200T.19	WHEEL SUPPORT, LOWER
4	W1200T.04	BOLT (M16x100)	22	W1200T.22	WHEEL SUPPORT, UPPER
5	W1200T.05	LOCK NUT (M16)	23	W1200T.23	ROLLER TABLE
6	W1200T.06	WASHER (16mm)	24	W1200T.24	CLAMP SUPPORT ARM
7	W1200T.07	BOLT (M16x130)	25	W1200T.25	SUPPORT ROD
8	W1200T.08	HYDRAULIC UNIT	27	W1200T.27	CASTOR ASS'Y
9	W1200T.09	BASE FRAME (PART 1)	28	W1200T.28	HEX SOCKET HEAD SCREW
10	W1200T.10	BASE FRAME (PART 2)	29	W1200T.29	FRAME, SIDE
11	W1200T.11	PUMP HANDLE	30	W1200T.30	SAFETY PIN
12	W1200T.12	FOOT PEDAL	31	W1200T.31	SAFETY PIN
13	W1200T.13	HEX SOCKET HEAD SCREW (M8x55)	33	W1200T.33	HANDLE
14	W1200T.14	LOCK NUT (M8)	34	W1200T.34	HANDLE GRIP
15	W1200T.15	SLEEVE	35	W1200T.35	CASTOR WHEEL
16	W1200T.16	RETAINING RING	36	W1200T.36	TORSION SPRING
17	W1200T.17	PIN	37	W1200T.37	END CAP
18	W1200T.18	HIGHT ADJUSTMENT CLAMP			

NOTE: It is our policy to continually improve products and as such we reserve the right to alter data, specifications and component parts without prior notice.

IMPORTANT: No liability is accepted for incorrect use of product.

WARRANTY: Guarantee is 12 months from purchase date, proof of which will be required for any claim.

INFORMATION: For a copy of our latest catalogue and promotions call us on 01284 757525 and leave your full name and address, including postcode.