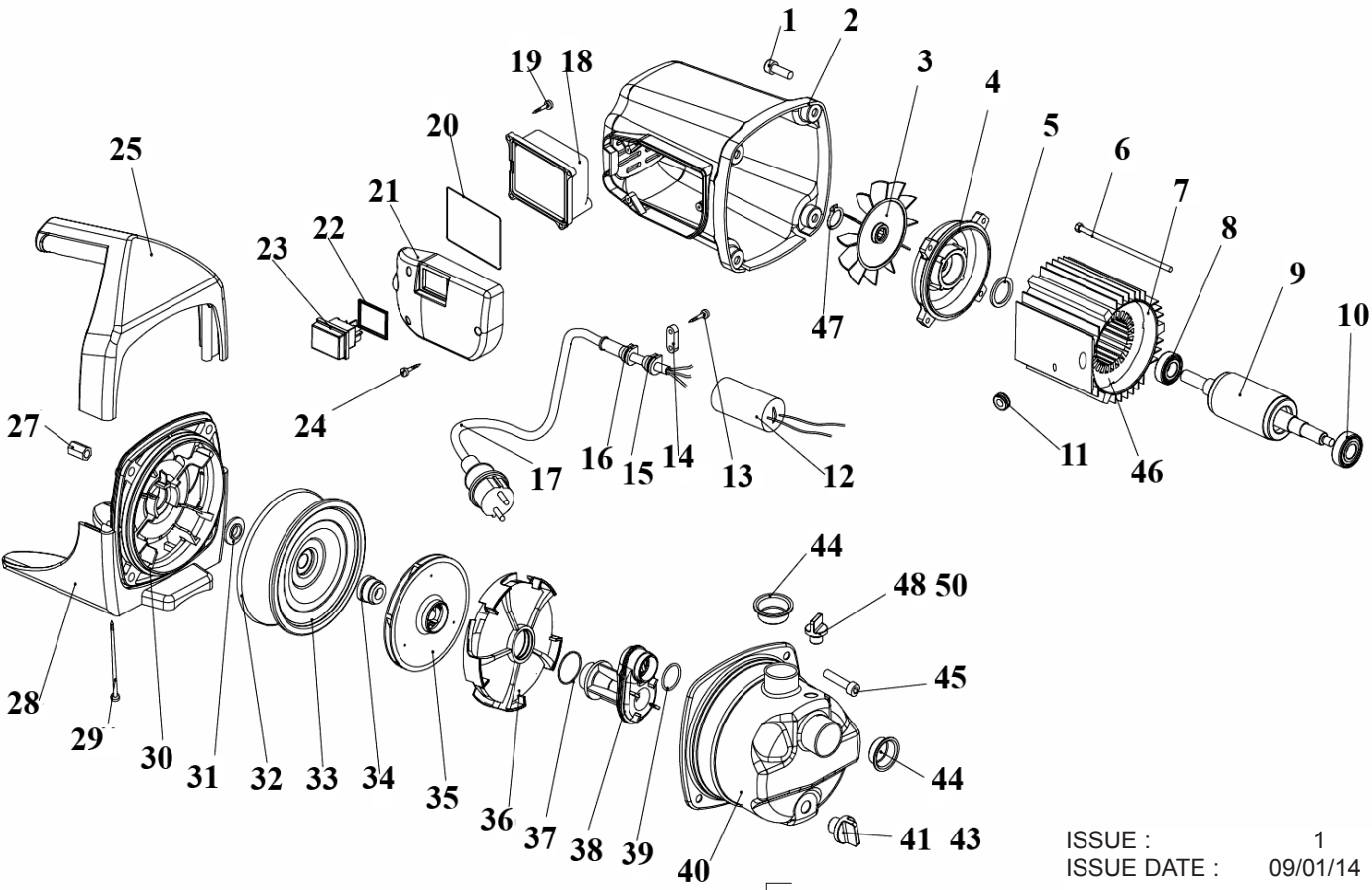




PARTS FOR :
SURFACE MOUNTING WATER PUMP STAINLESS STEEL 62LTR/MIN 230V
MODEL : WPS062S



ISSUE : 1
ISSUE DATE : 09/01/14

ITEM	PART NO	DESCRIPTION	ITEM	PART NO	DESCRIPTION
1	WP70812	SCREW (M8x12)	25	WP01601001	HANDLE
2	WP03401001	MOTOR COVER	27	WP07601001	HEX NUT
3	WP03501001	FAN	28	WP00605001	BASE
4	WP02603002	REAR COVER	29	WP845E	SELF TAPPING SCREW ST4.2X113
5	WP03801001	WAVE WASHER	30	WP02504007	FRONT COVER
6	WP5780	BOLT M5 X 125	31	WP05901001	BUSHING
7	WP02402004	ALUMINUM CASING	32	WP05101024	O-RING
8	WP276	BEARING B6201-2Z	33	WP04902005	SEALING PAD
9	WP02303005	ROTOR	34	WP06102002	MECHANICAL SEAL
10	WP276A	BEARING 6202-2Z	35	WP00904008	IMPELLER
11	WP05202010	WIRE SHEATH	36	WP03601018	DIFFUSER PLATE KIT
12	WP08401001A	CAPACITOR 20UF	37	WP05101004	O-RING
13	WP07802015	SELF-TAPPING SCREW	38	WP05003002	DIFFUSER
14	WP05501003	CABLE GRIP	39	WP05101030	O-RING
15	WP05201007	CABLE GRIP	40	WP03302001	PUMP HEAD
16	WP05201020	CABLE GRIP	41	WP07902003	VALVE COVER
17	WP08703004	POWER CABLE	43	WP05101086	O-RING
18	WP07101002	WATERPROOF COVER	44	WP04701001	DUST COVER
19	WP07802028	SELF TAPPING SCREW	45	WP70820	SCREW M8X20
20	WP05101025	O-RING	46	WP02206005	STATOR
21	WP04501001	SIDE COVER	47	WP894112	CHECKED RING
22	WP03203001	SEALING WASHER	48	WP07901003	VALVE COVER
23	WP01405007	WATERPROOF SWITCH	50	WP05101087	O-RING
24	WP845D	SELF TAPPING SCREW ST3.5X20			

NOTE: It is our policy to continually improve products and as such we reserve the right to alter data, specifications and component parts without prior notice.
IMPORTANT: No liability is accepted for incorrect use of product.
WARRANTY: Guarantee is 12 months from purchase date, proof of which will be required for any claim.
INFORMATION: For a copy of our latest catalogue and promotions call us on 01284 757525 and leave your full name and address, including postcode.



Sole UK Distributor,
Sealey Group, Kempson Way,
Suffolk Business Park,
Bury St Edmunds, Suffolk, IP32 7AR



01284 757500
01284 703534



www.sealey.co.uk
sales@sealey.co.uk